

For Research Use Only

NHE2 Polyclonal antibody

Catalog Number: 25105-1-AP



Basic Information

Catalog Number:

25105-1-AP

Size:

150ul, Concentration: 600 ug/ml by Nanodrop;

Source:

Rabbit

Isotype:

IgG

Immunogen Catalog Number:

AG18801

GenBank Accession Number:

BC136377

GeneID (NCBI):

6549

UNIPROT ID:

Q9UBY0

Full Name:

solute carrier family 9
(sodium/hydrogen exchanger),
member 2

Calculated MW:

812 aa, 92 kDa

Observed MW:

70 kDa

Purification Method:

Antigen affinity purification

Recommended Dilutions:

WB 1:5000-1:50000

Applications

Tested Applications:

WB, ELISA

Species Specificity:

human, mouse, rat

Positive Controls:

WB : HEK-293 cells, rat brain tissue, mouse stomach tissue

Background Information

NHE2, also known as SLC9A2, is a protein-coding gene mainly at the top of gastrointestinal epithelial cells. It mainly encodes a member of the sodium-hydrogen exchanger (NHE) protein family, which is localized to the apical membrane and is easily degraded by lysosomes, resulting in a short half-life. NHE2 is involved in sodium ion transport by exchanging intracellular hydrogen ions into external sodium ions, and helps in the regulation of cell pH and volume to eliminate acids produced by active metabolism or against adverse environmental conditions. NHE2 is widely distributed in tissues of the gastrointestinal tract, kidney, heart, testes, uterus, and adrenal glands (PMID: 37688782). The observed molecular weight of NHE2 is 70 kDa, which might be the unmodified form of NHE2 (PMID: 10444453, 10666043).

Storage

Storage:

Store at -20°C. Stable for one year after shipment.

Storage Buffer:

PBS with 0.02% sodium azide and 50% glycerol pH 7.3.

Aliquoting is unnecessary for -20°C storage

*** 20ul sizes contain 0.1% BSA

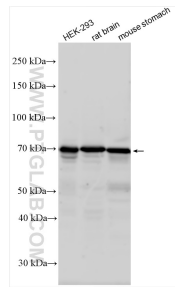
For technical support and original validation data for this product please contact:

T: 1 (888) 4PTGLAB (1-888-478-4522) (toll free in USA), or 1(312) 455-8498 (outside USA)

E: proteintech@ptglab.com
W: ptglab.com

This product is exclusively available under Proteintech Group brand and is not available to purchase from any other manufacturer.

Selected Validation Data



Various lysates were subjected to SDS PAGE followed by western blot with 25105-1-AP (NHE2 antibody) at dilution of 1:20000 incubated at room temperature for 1.5 hours.