

For Research Use Only

# PPM1E Polyclonal antibody

Catalog Number: 25089-1-AP



## Basic Information

<b>Catalog Number:</b> 25089-1-AP	<b>GenBank Accession Number:</b> BC136290	<b>Purification Method:</b> Antigen affinity purification
<b>Size:</b> 150ul , Concentration: 900 µg/ml by Nanodrop and 400 µg/ml by Bradford method using BSA as the standard;	<b>GeneID (NCBI):</b> 22843	<b>Recommended Dilutions:</b> WB 1:5000-1:50000 IHC 1:50-1:500 IF 1:200-1:800
<b>Source:</b> Rabbit	<b>Full Name:</b> protein phosphatase 1E (PP2C domain containing)	
<b>Isotype:</b> IgG	<b>Calculated MW:</b> 764 aa, 85 kDa	
<b>Immunogen Catalog Number:</b> AG18751	<b>Observed MW:</b> 85 kDa	

## Applications

### Tested Applications:

IF, IHC, WB, ELISA

### Species Specificity:

human, Mouse, Rat

**Note-IHC: suggested antigen retrieval with TE buffer pH 9.0; (\*) Alternatively, antigen retrieval may be performed with citrate buffer pH 6.0**

### Positive Controls:

**WB** : human brain tissue, mouse brain tissue, rat brain tissue

**IHC** : rat brain tissue,

**IF** : SH-SY5Y cells, A431 cells

## Background Information

Ca<sup>2+</sup>/calmodulin-dependent protein kinase phosphatase (CaMKP-N), also known as Ppm1E, is an AMPKα phosphatase, which is up-regulated in human gastric cancer tissues (PMID: 28423719).

## Storage

### Storage:

Store at -20°C. Stable for one year after shipment.

### Storage Buffer:

PBS with 0.02% sodium azide and 50% glycerol pH 7.3.

Aliquoting is unnecessary for -20°C storage

\*\*\* 20ul sizes contain 0.1% BSA

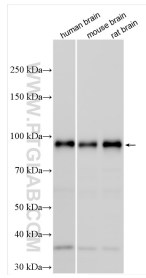
For technical support and original validation data for this product please contact:

T: 1 (888) 4PTGLAB (1-888-478-4522) (toll free in USA), or 1(312) 455-8498 (outside USA)

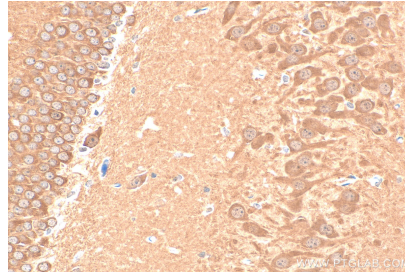
E: proteintech@ptglab.com  
W: ptglab.com

**This product is exclusively available under Proteintech Group brand and is not available to purchase from any other manufacturer.**

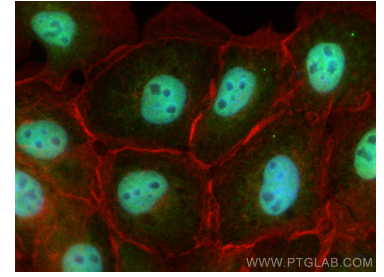
## Selected Validation Data



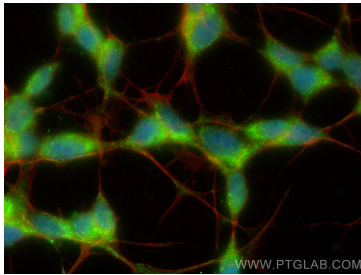
Various lysates were subjected to SDS PAGE followed by western blot with 25089-1-AP (PPM1E antibody) at dilution of 1:10000 incubated at room temperature for 1.5 hours.



Immunohistochemical analysis of paraffin-embedded rat brain tissue slide using 25089-1-AP (PPM1E antibody) at dilution of 1:200 (under 40x lens). Heat mediated antigen retrieval with Tris-EDTA buffer (pH 9.0).



Immunofluorescent analysis of (4% PFA) fixed A431 cells using PPM1E antibody (25089-1-AP) at dilution of 1:400 and CoraLite®488-Conjugated AffiniPure Goat Anti-Rabbit IgG(H+L), CL594-Phalloidin (red).



Immunofluorescent analysis of (-20°C Ethanol) fixed SH-SY5Y cells using PPM1E antibody (25089-1-AP) at dilution of 1:400 and CoraLite®488-Conjugated AffiniPure Goat Anti-Rabbit IgG(H+L), CL594-Phalloidin (red).