

For Research Use Only

GDPD2 Polyclonal antibody

Catalog Number: 25074-1-AP



Basic Information

Catalog Number: 25074-1-AP	GenBank Accession Number: BC032009	Purification Method: Antigen affinity purification
Size: 150ul , Concentration: 500 µg/ml by Nanodrop and 307 µg/ml by Bradford method using BSA as the standard;	GeneID (NCBI): 54857	Recommended Dilutions: WB 1:500-1:1000 IHC 1:100-1:400
Source: Rabbit	Full Name: glycerophosphodiester phosphodiesterase domain containing 2	
Isotype: IgG	Calculated MW: 539 aa, 62 kDa	
Immunogen Catalog Number: AG18377	Observed MW: 62 kDa	

Applications

Tested Applications:

IHC, WB, ELISA

Species Specificity:

human, mouse

Note-IHC: suggested antigen retrieval with TE buffer pH 9.0; (*) Alternatively, antigen retrieval may be performed with citrate buffer pH 6.0

Positive Controls:

WB : mouse skin tissue,

IHC : human liver cancer tissue,

Background Information

GDPD2 (Glycerophosphoinositol inositolphosphodiesterase) is also named as GDE3, OBDPF and belongs to the glycerophosphoryl diester phosphodiesterase family. It has glycerophosphoinositol inositolphosphodiesterase activity and specifically hydrolyzes glycerophosphoinositol, with no activity for other substrates such as glycerophosphoinositol 4-phosphate, glycerophosphocholine, glycerophosphoethanolamine, and glycerophosphoserine. This protein has 3 isoforms produced by alternative splicing.

Storage

Storage:

Store at -20°C. Stable for one year after shipment.

Storage Buffer:

PBS with 0.02% sodium azide and 50% glycerol pH 7.3.

Aliquoting is unnecessary for -20°C storage

*** 20ul sizes contain 0.1% BSA

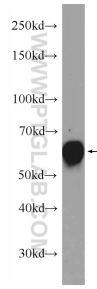
For technical support and original validation data for this product please contact:

T: 1 (888) 4PTGLAB (1-888-478-4522) (toll free in USA), or 1(312) 455-8498 (outside USA)

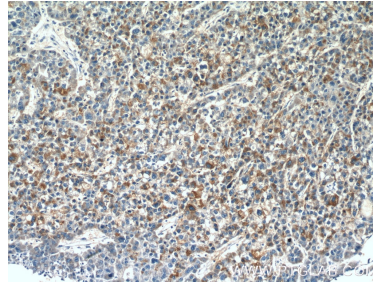
E: proteintech@ptglab.com
W: ptglab.com

This product is exclusively available under Proteintech Group brand and is not available to purchase from any other manufacturer.

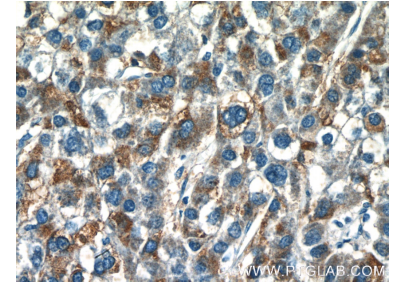
Selected Validation Data



mouse skin tissue were subjected to SDS PAGE followed by western blot with 25074-1-AP (GDPD2 Antibody) at dilution of 1:600 incubated at room temperature for 1.5 hours.



Immunohistochemical analysis of paraffin-embedded human liver cancer tissue slide using 25074-1-AP (GDPD2 Antibody) at dilution of 1:200 (under 10x lens).



Immunohistochemical analysis of paraffin-embedded human liver cancer tissue slide using 25074-1-AP (GDPD2 Antibody) at dilution of 1:200 (under 40x lens).