

For Research Use Only

# NWD1 Polyclonal antibody

Catalog Number: 25025-1-AP **1 Publications**



## Basic Information

<b>Catalog Number:</b> 25025-1-AP	<b>GenBank Accession Number:</b> BC117698	<b>Purification Method:</b> Antigen affinity purification
<b>Size:</b> 150ul , Concentration: 450 µg/ml by Nanodrop and 213 µg/ml by Bradford method using BSA as the standard;	<b>GeneID (NCBI):</b> 284434	<b>Recommended Dilutions:</b> WB 1:500-1:1000 IF 1:20-1:200
<b>Source:</b> Rabbit	<b>Full Name:</b> NACHT and WD repeat domain containing 1	
<b>Isotype:</b> IgG	<b>Calculated MW:</b> 1564 aa, 175 kDa	
<b>Immunogen Catalog Number:</b> AG21754	<b>Observed MW:</b> 77 kDa	

## Applications

<b>Tested Applications:</b> IF, WB, ELISA	<b>Positive Controls:</b> WB : SH-SY5Y cells, HepG2 cells, mouse brain tissue
<b>Cited Applications:</b> WB	<b>IF :</b> HepG2 cells,
<b>Species Specificity:</b> human, mouse	
<b>Cited Species:</b> human	

## Background Information

NWD1 also named as NWD1 Ens or NACHT and WD repeat domain containing 1 is a 1564 amino acid protein, which contains 1 NACHT domain and 13 WD repeat. The molecular weight of NWD1 was detected by western blot. The result shows that the molecular weight of NWD1 is 77 kDa., but NWD1 is a 174 kDa protein according to UniProt. The function of NWD1 is still non-known, meanwhile the molecular weight of NWD1 is still remained to be confirmed.

## Notable Publications

Author	Pubmed ID	Journal	Application
Qin Yang	31474551	EBioMedicine	WB

## Storage

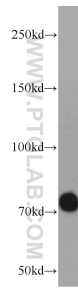
**Storage:**  
Store at -20°C. Stable for one year after shipment.  
**Storage Buffer:**  
PBS with 0.02% sodium azide and 50% glycerol pH 7.3.  
Aliquoting is unnecessary for -20°C storage

**\*\*\* 20ul sizes contain 0.1% BSA**

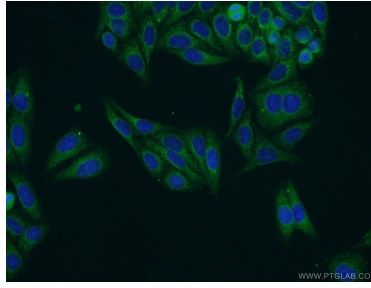
For technical support and original validation data for this product please contact:  
T: 1 (888) 4PTGLAB (1-888-478-4522) (toll free in USA), or 1(312) 455-8498 (outside USA)  
E: proteintech@ptglab.com  
W: ptglab.com

**This product is exclusively available under Proteintech Group brand and is not available to purchase from any other manufacturer.**

## Selected Validation Data



SH-SY5Y cells were subjected to SDS PAGE followed by western blot with 25025-1-AP (NWD1 Antibody) at dilution of 1:600 incubated at room temperature for 1.5 hours.



Immunofluorescent analysis of HepG2 cells using 25025-1-AP (NWD1 antibody) at dilution of 1:50 and Alexa Fluor 488-conjugated AffiniPure Goat Anti-Rabbit IgG(H+L).