

For Research Use Only

C10orf68 Polyclonal antibody

Catalog Number: 24975-1-AP



Basic Information

Catalog Number: 24975-1-AP	GenBank Accession Number: BC125091	Purification Method: Antigen affinity purification
Size: 150ul , Concentration: 750 µg/ml by Nanodrop and 360 µg/ml by Bradford method using BSA as the standard;	GeneID (NCBI): 79741	Recommended Dilutions: WB 1:500-1:1000 IHC 1:50-1:500 IF 1:10-1:100
Source: Rabbit	Full Name: chromosome 10 open reading frame 68	
Isotype: IgG	Calculated MW: 628 aa, 71 kDa	
Immunogen Catalog Number: AG21682	Observed MW: 65 kDa	

Applications

Tested Applications: IF, IHC, WB, ELISA	Positive Controls: WB : A549 cells, COS-7 cells IHC : human kidney tissue, IF : HEK-293 cells,
Species Specificity: human, monkey	
Note-IHC: suggested antigen retrieval with TE buffer pH 9.0; (*) Alternatively, antigen retrieval may be performed with citrate buffer pH 6.0	

Background Information

chromosome 10 open reading frame 68 (C10orf68) is a 628 amino-acid protein, which may have three isoforms. The function of C10orf68 is still non-known and needs to be further studied.

Storage

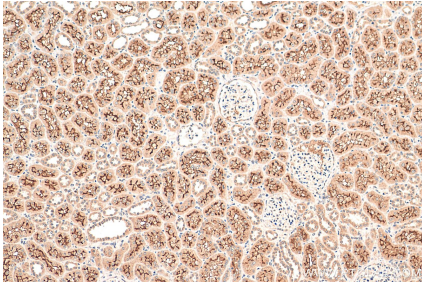
Storage:
Store at -20°C. Stable for one year after shipment.
Storage Buffer:
PBS with 0.02% sodium azide and 50% glycerol pH 7.3.
Aliquoting is unnecessary for -20°C storage

*** 20ul sizes contain 0.1% BSA

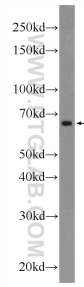
For technical support and original validation data for this product please contact:
T: 1 (888) 4PTGLAB (1-888-478-4522) (toll free in USA), or 1(312) 455-8498 (outside USA)
E: proteintech@ptglab.com
W: ptglab.com

This product is exclusively available under Proteintech Group brand and is not available to purchase from any other manufacturer.

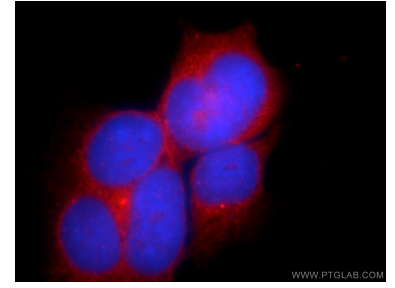
Selected Validation Data



Immunohistochemical analysis of paraffin-embedded human kidney tissue slide using 24975-1-AP (C10orf68 antibody) at dilution of 1:200 (under 10x lens). Heat mediated antigen retrieval with Tris-EDTA buffer (pH 9.0).



A549 cells were subjected to SDS PAGE followed by western blot with 24975-1-AP (C10orf68 Antibody) at dilution of 1:600 incubated at room temperature for 1.5 hours.



Immunofluorescent analysis of HEK-293 cells using 24975-1-AP (C10orf68 antibody) at dilution of 1:25 and Rhodamine-Goat anti-Rabbit IgG.