

For Research Use Only

# SCCPDH Polyclonal antibody

Catalog Number: 24941-1-AP



## Basic Information

<b>Catalog Number:</b> 24941-1-AP	<b>GenBank Accession Number:</b> BC026185	<b>Purification Method:</b> Antigen affinity purification
<b>Size:</b> 150ul , Concentration: 650 µg/ml by Nanodrop and 347 µg/ml by Bradford method using BSA as the standard;	<b>GeneID (NCBI):</b> 51097	<b>Recommended Dilutions:</b> WB 1:500-1:2000 IP 0.5-4.0 ug for IP and 1:200-1:1000 for WB
<b>Source:</b> Rabbit	<b>Full Name:</b> saccharopine dehydrogenase (putative)	<b>IF 1:50-1:500</b>
<b>Isotype:</b> IgG	<b>Calculated MW:</b> 429 aa, 47 kDa	
<b>Immunogen Catalog Number:</b> AG11551	<b>Observed MW:</b> 40-47 kDa	

## Applications

<b>Tested Applications:</b> IF, IP, WB, ELISA	<b>Positive Controls:</b>
<b>Species Specificity:</b> human, mouse	<b>WB :</b> COLO 320 cells, HepG2 cells
	<b>IP :</b> COLO 320 cells,
	<b>IF :</b> HepG2 cells,

## Background Information

### Storage

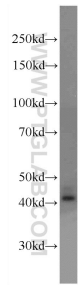
**Storage:**  
Store at -20°C. Stable for one year after shipment.  
**Storage Buffer:**  
PBS with 0.02% sodium azide and 50% glycerol pH 7.3.  
Aliquoting is unnecessary for -20°C storage

\*\*\* 20ul sizes contain 0.1% BSA

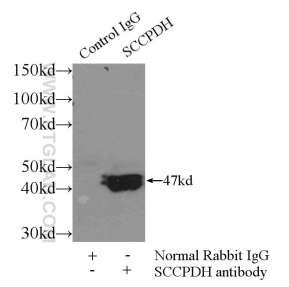
For technical support and original validation data for this product please contact:  
T: 1 (888) 4PTGLAB (1-888-478-4522) (toll free in USA), or 1(312) 455-8498 (outside USA)  
E: proteintech@ptglab.com  
W: ptglab.com

This product is exclusively available under Proteintech Group brand and is not available to purchase from any other manufacturer.

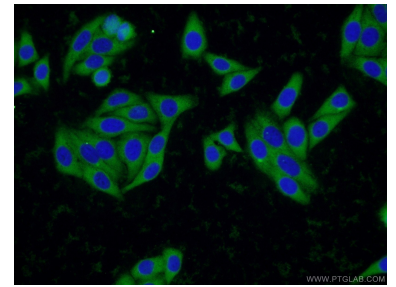
## Selected Validation Data



COLO 320 cells were subjected to SDS PAGE followed by western blot with 24941-1-AP (SCCPDH Antibody) at dilution of 1:1000 incubated at room temperature for 1.5 hours.



IP Result of anti-SCCPDH (IP:24941-1-AP, 3ug; Detection:24941-1-AP 1:300) with COLO 320 cells lysate 1700ug.



Immunofluorescent analysis of HepG2 cells using 24941-1-AP (SCCPDH antibody) at dilution of 1:50 and Alexa Fluor 488-conjugated AffiniPure Goat Anti-Rabbit IgG(H+L).