

For Research Use Only

MATCHF1 Polyclonal antibody

Catalog Number: 24771-1-AP



Basic Information

Catalog Number: 24771-1-AP	GenBank Accession Number: BC153124	Purification Method: Antigen affinity purification
Size: 150ul , Concentration: 500 µg/ml by Nanodrop and 247 µg/ml by Bradford method using BSA as the standard;	GeneID (NCBI): 55016	Recommended Dilutions: WB 1:1000-1:4000
Source: Rabbit	Full Name: membrane-associated ring finger (C3HC4) 1	
Isotype: IgG	Calculated MW: 289 aa, 32 kDa	
Immunogen Catalog Number: AG20231	Observed MW: 60 kDa	

Applications

Tested Applications: WB, ELISA	Positive Controls: WB : mouse brain tissue, rat brain tissue
Species Specificity: human, mouse, rat	

Background Information

MARCH1 is mainly found in secondary lymphoid organs, more specifically in the endocytic pathway of dendritic cells (DCs) and B cells (11-15). MARCH1 reduces the half-life of peptide/MHC II complexes by causing their redistribution from recycling endosomes to lysosomes. MARCH1 homodimerizes and also forms heterodimers with others family members (PMID: 22508929).

Storage

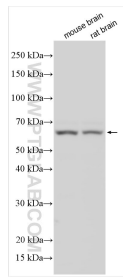
Storage:
Store at -20°C. Stable for one year after shipment.
Storage Buffer:
PBS with 0.02% sodium azide and 50% glycerol pH 7.3.
Aliquoting is unnecessary for -20°C storage

*** 20ul sizes contain 0.1% BSA

For technical support and original validation data for this product please contact:
T: 1 (888) 4PTGLAB (1-888-478-4522) (toll free in USA), or 1(312) 455-8498 (outside USA)
E: proteintech@ptglab.com
W: ptglab.com

This product is exclusively available under Proteintech Group brand and is not available to purchase from any other manufacturer.

Selected Validation Data



Various lysates were subjected to SDS PAGE followed by western blot with 24771-1-AP (MATCHF1 antibody) at dilution of 1:2000 incubated at room temperature for 1.5 hours.