

For Research Use Only

ODF1 Polyclonal antibody

Catalog Number: 24736-1-AP **3 Publications**



Basic Information

Catalog Number: 24736-1-AP	GenBank Accession Number: BC104457	Purification Method: Antigen affinity purification
Size: 150ul, Concentration: 550 µg/ml by Nanodrop and 353 µg/ml by Bradford method using BSA as the standard;	GeneID (NCBI): 4956	Recommended Dilutions: WB 1:500-1:1000 IHC 1:20-1:200
Source: Rabbit	Full Name: outer dense fiber of sperm tails 1	
Isotype: IgG	Calculated MW: 250 aa, 28 kDa	
Immunogen Catalog Number: AG20562	Observed MW: 28 kDa, 56 kDa	

Applications

Tested Applications: IHC, WB, ELISA	Positive Controls: WB : rat testis tissue, mouse testis tissue IHC : human testis tissue,
Cited Applications: WB	
Species Specificity: human, rat, mouse	
Cited Species: human, mouse, pig	
Note-IHC: suggested antigen retrieval with TE buffer pH 9.0; (*) Alternatively, antigen retrieval may be performed with citrate buffer pH 6.0	

Background Information

ODF1, also named as Outer dense fiber protein 1, is a 250 amino acid protein, which contains the C-terminal contains many C-X-P repeats. ODF1 is a component of the outer dense fibers (ODF) of spermatozoa. ODF27 that suggested the possibility of inter- actions between ODF27 itself and/or between ODF27 and other sperm tail proteins.

Notable Publications

Author	Pubmed ID	Journal	Application
Hua Nie	35860846	Mol Genet Genomic Med	WB
Yongjie Xu	34336820	Front Cell Dev Biol	WB
Yanjie Ma	38038747	Cell Mol Life Sci	WB

Storage

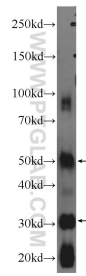
Storage:
Store at -20°C. Stable for one year after shipment.
Storage Buffer:
PBS with 0.02% sodium azide and 50% glycerol pH 7.3.
Aliquoting is unnecessary for -20°C storage

*** 20ul sizes contain 0.1% BSA

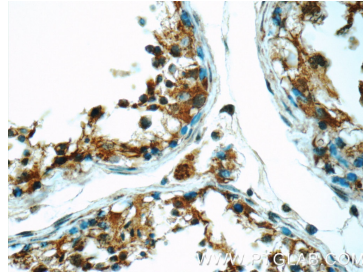
For technical support and original validation data for this product please contact:
T: 1 (888) 4PTGLAB (1-888-478-4522) (toll free in USA), or 1(312) 455-8498 (outside USA)
E: proteintech@ptglab.com
W: ptglab.com

This product is exclusively available under Proteintech Group brand and is not available to purchase from any other manufacturer.

Selected Validation Data



rat testis tissue were subjected to SDS PAGE followed by western blot with 24736-1-AP (ODF1 Antibody) at dilution of 1:600 incubated at room temperature for 1.5 hours.



Immunohistochemical analysis of paraffin-embedded human testis tissue slide using 24736-1-AP (ODF1 Antibody) at dilution of 1:50 (under 40x lens).