

For Research Use Only

PRY Polyclonal antibody

Catalog Number: 24688-1-AP



Basic Information

Catalog Number: 24688-1-AP	GenBank Accession Number: BC153128	Purification Method: Antigen affinity purification
Size: 150ul , Concentration: 650 µg/ml by Nanodrop and 440 µg/ml by Bradford method using BSA as the standard;	GeneID (NCBI): 442862	Recommended Dilutions: WB 1:500-1:2000 IHC 1:50-1:500 IF 1:10-1:100
Source: Rabbit	Full Name: PTPN13-like, Y-linked 2	
Isotype: IgG	Calculated MW: 147 aa, 17 kDa	
Immunogen Catalog Number: AG20232		

Applications

Tested Applications: IF, IHC, WB, ELISA	Positive Controls: WB : PC-3 cells, IHC : human prostate cancer tissue, IF : HepG2 cells,
Species Specificity: human	
Note-IHC: suggested antigen retrieval with TE buffer pH 9.0; (*) Alternatively, antigen retrieval may be performed with citrate buffer pH 6.0	

Background Information

PRY is Testis-specific PTP-BL-related Y protein which has two isoforms with MW 16 and 6-8 kDa.

Storage

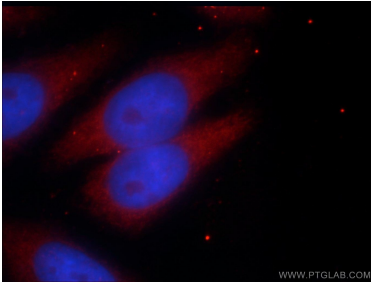
Storage:
Store at -20°C. Stable for one year after shipment.
Storage Buffer:
PBS with 0.02% sodium azide and 50% glycerol pH 7.3.
Aliquoting is unnecessary for -20°C storage

*** 20ul sizes contain 0.1% BSA

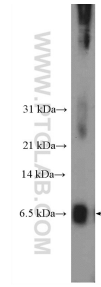
For technical support and original validation data for this product please contact:
T: 1 (888) 4PTGLAB (1-888-478-4522) (toll free in USA), or 1(312) 455-8498 (outside USA)
E: proteintech@ptglab.com
W: ptglab.com

This product is exclusively available under Proteintech Group brand and is not available to purchase from any other manufacturer.

Selected Validation Data



Immunofluorescent analysis of HepG2 cells using 24688-1-AP (PRY antibody) at dilution of 1:25 and Rhodamine-Goat anti-Rabbit IgG.



PC-3 cells were subjected to SDS PAGE followed by western blot with 24688-1-AP (PRY antibody at dilution of 1:1000 incubated at room temperature for 1.5 hours.