

For Research Use Only

CEP85L Polyclonal antibody

Catalog Number: 24588-1-AP

Featured Product

2 Publications



Basic Information

Catalog Number: 24588-1-AP	GenBank Accession Number: BC153054	Purification Method: Antigen affinity purification
Size: 150ul , Concentration: 700 µg/ml by Nanodrop and 353 µg/ml by Bradford method using BSA as the standard;	GeneID (NCBI): 387119	Recommended Dilutions: WB 1:300-1:800 IHC 1:20-1:200
Source: Rabbit	Full Name: chromosome 6 open reading frame 204	
Isotype: IgG	Calculated MW: 805 aa, 92 kDa	
Immunogen Catalog Number: AG20235	Observed MW: 56 kDa	

Applications

Tested Applications: IHC, WB, ELISA	Positive Controls: WB : PC-13 cells, IHC : human testis tissue,
Cited Applications: CoIP, IF, WB	
Species Specificity: human	
Cited Species: human, mouse	

Note-IHC: suggested antigen retrieval with TE buffer pH 9.0; (*) Alternatively, antigen retrieval may be performed with citrate buffer pH 6.0

Background Information

CEP85L, also named as C6orf204, is a gene which encodes a protein that has identified as a breast cancer antigen. Nothing more is known of its function at this time. There're five transcript variants with MW 45 kDa, 55-56 kDa and 91-92 kDa.

Notable Publications

Author	Pubmed ID	Journal	Application
Andrew Kodani	32097629	Neuron	WB,IF,CoIP
Meng-Han Tsai	32097630	Neuron	WB,IF

Storage

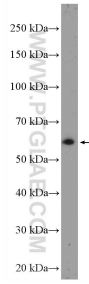
Storage:
Store at -20°C. Stable for one year after shipment.
Storage Buffer:
PBS with 0.02% sodium azide and 50% glycerol pH 7.3.
Aliquoting is unnecessary for -20°C storage

*** 20ul sizes contain 0.1% BSA

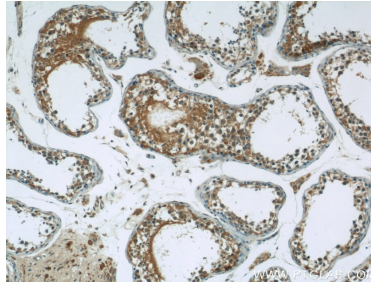
For technical support and original validation data for this product please contact:
T: 1 (888) 4PTGLAB (1-888-478-4522) (toll free in USA), or 1(312) 455-8498 (outside USA)
E: proteintech@ptglab.com
W: ptglab.com

This product is exclusively available under Proteintech Group brand and is not available to purchase from any other manufacturer.

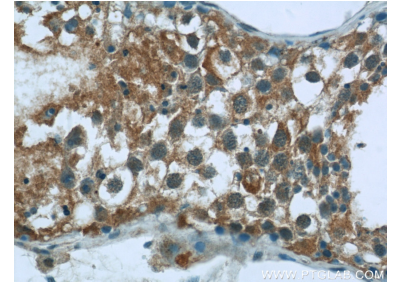
Selected Validation Data



PC-13 cells were subjected to SDS PAGE followed by western blot with 24588-1-AP (C6orf204 Antibody) at dilution of 1:600 incubated at room temperature for 1.5 hours.



Immunohistochemical analysis of paraffin-embedded human testis tissue slide using 24588-1-AP (C6orf204 Antibody) at dilution of 1:50 (under 10x lens).



Immunohistochemical analysis of paraffin-embedded human testis tissue slide using 24588-1-AP (C6orf204 Antibody) at dilution of 1:50 (under 40x lens).