

For Research Use Only

# NF45 Polyclonal antibody

Catalog Number: 24572-1-AP



## Basic Information

<b>Catalog Number:</b> 24572-1-AP	<b>GenBank Accession Number:</b> BC000382	<b>Purification Method:</b> Antigen affinity purification
<b>Size:</b> 150ul , Concentration: 400 µg/ml by Nanodrop and 313 µg/ml by Bradford method using BSA as the standard;	<b>GeneID (NCBI):</b> 3608	<b>Recommended Dilutions:</b> WB 1:500-1:2000 IHC 1:20-1:200 IF 1:50-1:500
<b>Source:</b> Rabbit	<b>Full Name:</b> interleukin enhancer binding factor 2,	
<b>Isotype:</b> IgG	<b>Calculated MW:</b> 43 kDa	
<b>Immunogen Catalog Number:</b> AG21480	<b>Observed MW:</b> 43 kDa	

## Applications

### Tested Applications:

IF, IHC, WB, ELISA

### Species Specificity:

human, mouse

**Note-IHC: suggested antigen retrieval with TE buffer pH 9.0; (\*) Alternatively, antigen retrieval may be performed with citrate buffer pH 6.0**

### Positive Controls:

WB : K-562 cells, HepG2 cells

IHC : human colon tissue, human breast cancer tissue

IF : HepG2 cells,

## Background Information

Interleukin-2 enhancer binding factor 2 (ILF2), also named as nuclear factor 45 (NF45), plays important roles in regulating interleukin-2 expression in mammals. It forms a heterodimeric complex with ILF3, which may regulate transcription of the IL2 gene during T-cell activation. It can also promote the formation of stable DNA-dependent protein kinase holoenzyme complexes on DNA [PMID:11739746,17129403].

## Storage

### Storage:

Store at -20°C. Stable for one year after shipment.

### Storage Buffer:

PBS with 0.02% sodium azide and 50% glycerol pH 7.3.

Aliquoting is unnecessary for -20°C storage

**\*\*\* 20ul sizes contain 0.1% BSA**

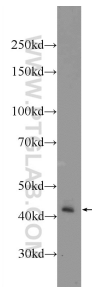
For technical support and original validation data for this product please contact:

T: 1 (888) 4PTGLAB (1-888-478-4522) (toll free in USA), or 1(312) 455-8498 (outside USA)

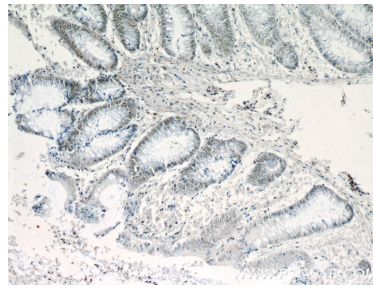
E: proteintech@ptglab.com  
W: ptglab.com

**This product is exclusively available under Proteintech Group brand and is not available to purchase from any other manufacturer.**

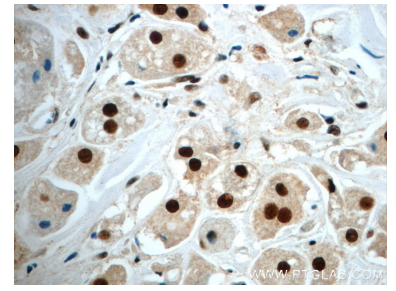
## Selected Validation Data



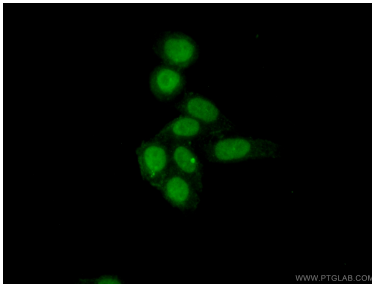
K-562 cells were subjected to SDS PAGE followed by western blot with 24572-1-AP (NF45 Antibody) at dilution of 1:1000 incubated at room temperature for 1.5 hours.



Immunohistochemical analysis of paraffin-embedded human colon slide using 24572-1-AP (NF45 Antibody) at dilution of 1:50.



Immunohistochemical analysis of paraffin-embedded human breast cancer slide using 24572-1-AP (NF45 Antibody) at dilution of 1:100.



Immunofluorescent analysis of (10% Formaldehyde) fixed HepG2 cells using 24572-1-AP (NF45 antibody) at dilution of 1:50 and Alexa Fluor 488-conjugated AffiniPure Goat Anti-Rabbit IgG(H+L).