

For Research Use Only

RNF25 Polyclonal antibody

Catalog Number: 24536-1-AP



Basic Information

Catalog Number: 24536-1-AP	GenBank Accession Number: BC015612	Purification Method: Antigen affinity purification
Size: 150ul , Concentration: 600 µg/ml by Nanodrop and 367 µg/ml by Bradford method using BSA as the standard;	GeneID (NCBI): 64320	Recommended Dilutions: WB 1:1000-1:6000 IHC 1:20-1:200
Source: Rabbit	Full Name: ring finger protein 25	
Isotype: IgG	Calculated MW: 459 aa, 51 kDa	
Immunogen Catalog Number: AG21369	Observed MW: 51 kDa	

Applications

Tested Applications: IHC, WB, ELISA	Positive Controls:
Species Specificity: human	WB : HeLa cells,
Note-IHC: suggested antigen retrieval with TE buffer pH 9.0; (*) Alternatively, antigen retrieval may be performed with citrate buffer pH 6.0	IHC : human cervical cancer tissue,

Background Information

Storage

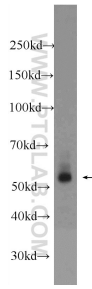
Storage:
Store at -20°C. Stable for one year after shipment.
Storage Buffer:
PBS with 0.02% sodium azide and 50% glycerol pH 7.3.
Aliquoting is unnecessary for -20°C storage

*** 20ul sizes contain 0.1% BSA

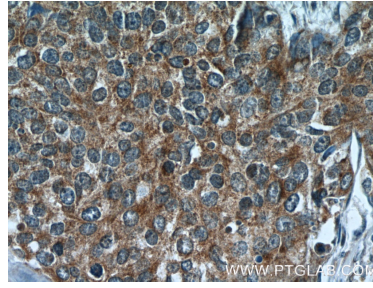
For technical support and original validation data for this product please contact:
T: 1 (888) 4PTGLAB (1-888-478-4522) (toll free in USA), or 1(312) 455-8498 (outside USA)
E: proteintech@ptglab.com
W: ptglab.com

This product is exclusively available under Proteintech Group brand and is not available to purchase from any other manufacturer.

Selected Validation Data



HeLa cells were subjected to SDS PAGE followed by western blot with 24536-1-AP (RNF25 Antibody) at dilution of 1:3000 incubated at room temperature for 1.5 hours.



Immunohistochemical analysis of paraffin-embedded human cervical cancer tissue slide using 24536-1-AP (RNF25 Antibody) at dilution of 1:50 (under 40x lens).