

For Research Use Only

E2F7 Polyclonal antibody

Catalog Number: 24489-1-AP

Featured Product

14 Publications



Basic Information

Catalog Number: 24489-1-AP	GenBank Accession Number: BC136366	Purification Method: Antigen affinity purification
Size: 150ul, Concentration: 650 µg/ml by Nanodrop and 380 µg/ml by Bradford method using BSA as the standard;	GeneID (NCBI): 144455	Recommended Dilutions: WB 1:500-1:1000
Source: Rabbit	Full Name: E2F transcription factor 7	
Isotype: IgG	Calculated MW: 911 aa, 100 kDa	
Immunogen Catalog Number: AG21599	Observed MW: 95 kDa	

Applications

Tested Applications: WB, ELISA	Positive Controls: WB : HeLa cells,
Cited Applications: CoIP, IF, IHC, WB	
Species Specificity: human	
Cited Species: human, mouse	

Background Information

E2F7 also named as E2F transcription factor 7 is a 911 amino acid protein, which belongs to the E2F/DP family. E2F7 localizes in the nucleus and mainly forms homodimers and, to a lesser extent, heterodimers with E2F8. E2F7 as a transcription factor involves in various processes such as angiogenesis, polyploidization of specialized cells and DNA damage response. E2F7 mainly forms homodimers and to a lesser extent, heterodimers with E2F8. (PMID: 18194653)

Notable Publications

Author	Pubmed ID	Journal	Application
Chang Yang	33061852	Cancer Cell Int	WB,IF,IHC
Yawen Ma	36400349	Acta Biomater	WB,IF
Amanda S Coutts	29760477	Cell Death Dis	IF

Storage

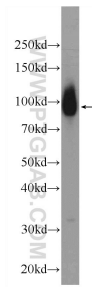
Storage:
Store at -20°C. Stable for one year after shipment.
Storage Buffer:
PBS with 0.02% sodium azide and 50% glycerol pH 7.3.
Aliquoting is unnecessary for -20°C storage

*** 20ul sizes contain 0.1% BSA

For technical support and original validation data for this product please contact:
T: 1 (888) 4PTGLAB (1-888-478-4522) (toll free in USA), or 1(312) 455-8498 (outside USA)
E: proteintech@ptglab.com
W: ptglab.com

This product is exclusively available under Proteintech Group brand and is not available to purchase from any other manufacturer.

Selected Validation Data



HeLa cells were subjected to SDS PAGE followed by western blot with 24489-1-AP (E2F7 Antibody) at dilution of 1:600 incubated at room temperature for 1.5 hours.