

For Research Use Only

CEP44 Polyclonal antibody

Catalog Number: 24457-1-AP

Featured Product

5 Publications



Basic Information

Catalog Number: 24457-1-AP	GenBank Accession Number: BC038667	Purification Method: Antigen affinity purification
Size: 150ul, Concentration: 900 µg/ml by Nanodrop;	GeneID (NCBI): 80817	Recommended Dilutions: WB 1:1000-1:8000 IHC 1:20-1:200
Source: Rabbit	Full Name: KIAA1712	
Isotype: IgG	Calculated MW: 390 aa, 44 kDa	
Immunogen Catalog Number: AG19961	Observed MW: 44 kDa	

Applications

Tested Applications:
IHC, WB, ELISA

Cited Applications:
IF, IP, WB

Species Specificity:
human, mouse

Cited Species:
human, mouse

Note-IHC: suggested antigen retrieval with TE buffer pH 9.0; (*) Alternatively, antigen retrieval may be performed with citrate buffer pH 6.0

Positive Controls:

WB: HeLa cells, mouse testis tissue, Jurkat cells, MCF-7 cells

IHC: human brain tissue,

Background Information

CEP44, also named as KIAA1712 and PS1TP3, localizes to centrosomes, spindle poles, and weakly in midbody. It is a 44 kDa centrosome protein.

Notable Publications

Author	Pubmed ID	Journal	Application
Delowar Hossain	34005155	J Cell Sci	WB,IF,IP
Delowar Hossain	31974111	J Cell Sci	WB,IF
Rachel E Turn	33596093	Mol Biol Cell	

Storage

Storage:

Store at -20°C. Stable for one year after shipment.

Storage Buffer:

PBS with 0.02% sodium azide and 50% glycerol pH 7.3.

Aliquoting is unnecessary for -20°C storage

*** 20ul sizes contain 0.1% BSA

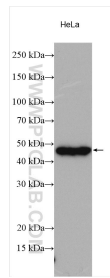
For technical support and original validation data for this product please contact:

T: 1 (888) 4PTGLAB (1-888-478-4522) (toll free in USA), or 1(312) 455-8498 (outside USA)

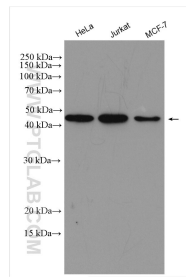
E: proteintech@ptglab.com
W: ptglab.com

This product is exclusively available under Proteintech Group brand and is not available to purchase from any other manufacturer.

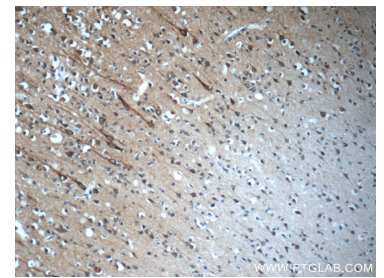
Selected Validation Data



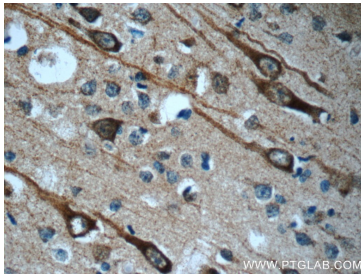
HeLa cells were subjected to SDS PAGE followed by western blot with 24457-1-AP (CEP44 antibody) at dilution of 1:2000 incubated at room temperature for 1.5 hours.



Various lysates were subjected to SDS PAGE followed by western blot with 24457-1-AP (CEP44 antibody) at dilution of 1:4000 incubated at room temperature for 1.5 hours.



Immunohistochemical analysis of paraffin-embedded human brain slide using 24457-1-AP (CEP44 antibody at dilution of 1:50 (under 10x lens).



Immunohistochemical analysis of paraffin-embedded human brain slide using 24457-1-AP (CEP44 antibody at dilution of 1:50 (under 40x lens).