

For Research Use Only

# GPATCH4 Polyclonal antibody

Catalog Number: 24399-1-AP



## Basic Information

<b>Catalog Number:</b> 24399-1-AP	<b>GenBank Accession Number:</b> BC040147	<b>Purification Method:</b> Antigen affinity purification
<b>Size:</b> 150ul , Concentration: 300 µg/ml by Nanodrop and 293 µg/ml by Bradford method using BSA as the standard;	<b>GeneID (NCBI):</b> 54865	<b>Recommended Dilutions:</b> WB 1:500-1:2000 IHC 1:20-1:200 IF 1:20-1:200
<b>Source:</b> Rabbit	<b>Full Name:</b> G patch domain containing 4	
<b>Isotype:</b> IgG	<b>Calculated MW:</b> 446 aa, 50 kDa	
<b>Immunogen Catalog Number:</b> AG20095	<b>Observed MW:</b> 50 kDa	

## Applications

<b>Tested Applications:</b> IF, IHC, WB, ELISA	<b>Positive Controls:</b>
<b>Species Specificity:</b> human, mouse, rat	<b>WB:</b> HEK-293 cells, mouse kidney tissue, rat kidney tissue
<b>Note-IHC: suggested antigen retrieval with TE buffer pH 9.0; (*) Alternatively, antigen retrieval may be performed with citrate buffer pH 6.0</b>	<b>IHC:</b> human liver tissue, human liver cancer tissue
	<b>IF:</b> HEK-293 cells,

## Background Information

GPATCH4 (G patch domain-containing protein 4) is a 446 amino acid protein containing one G-patch domain. Existing as three alternatively spliced isoforms. This antibody is a rabbit polyclonal antibody raised against the 189 residues of N-terminal of human GPATCH4 protein

## Storage

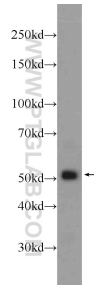
**Storage:**  
Store at -20°C. Stable for one year after shipment.  
**Storage Buffer:**  
PBS with 0.02% sodium azide and 50% glycerol pH 7.3.  
Aliquoting is unnecessary for -20°C storage

\*\*\* 20ul sizes contain 0.1% BSA

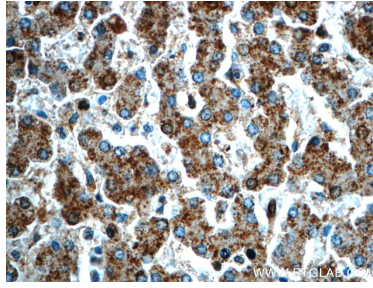
For technical support and original validation data for this product please contact:  
T: 1 (888) 4PTGLAB (1-888-478-4522) (toll free in USA), or 1(312) 455-8498 (outside USA)  
E: proteintech@ptglab.com  
W: ptglab.com

This product is exclusively available under Proteintech Group brand and is not available to purchase from any other manufacturer.

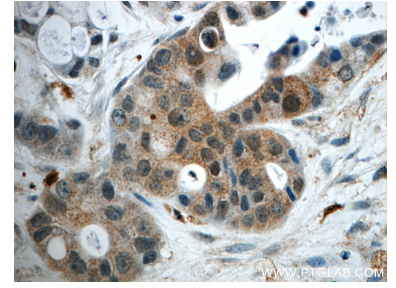
## Selected Validation Data



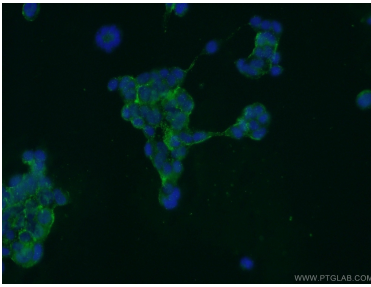
HEK-293 cells were subjected to SDS PAGE followed by western blot with 24399-1-AP (GPATCH4 Antibody) at dilution of 1:1000 incubated at room temperature for 1.5 hours.



Immunohistochemical analysis of paraffin-embedded human liver slide using 24399-1-AP (GPATCH4 Antibody) at dilution of 1:50.



Immunohistochemical analysis of paraffin-embedded human liver cancer slide using 24399-1-AP (GPATCH4 Antibody) at dilution of 1:50.



Immunofluorescent analysis of HEK-293 cells using 24399-1-AP (GPATCH4 antibody) at dilution of 1:50 and Alexa Fluor 488-conjugated AffiniPure Goat Anti-Rabbit IgG(H+L).