

For Research Use Only

# ANKRD16 Polyclonal antibody

Catalog Number: 24334-1-AP



## Basic Information

<b>Catalog Number:</b> 24334-1-AP	<b>GenBank Accession Number:</b> BC062346	<b>Purification Method:</b> Antigen affinity purification
<b>Size:</b> 150ul , Concentration: 650 µg/ml by Nanodrop and 320 µg/ml by Bradford method using BSA as the standard;	<b>GeneID (NCBI):</b> 54522	<b>Recommended Dilutions:</b> WB 1:500-1:1000 IF 1:50-1:500
<b>Source:</b> Rabbit	<b>Full Name:</b> ankyrin repeat domain 16	
<b>Isotype:</b> IgG	<b>Calculated MW:</b> 361 aa, 39 kDa	
<b>Immunogen Catalog Number:</b> AG19369	<b>Observed MW:</b> 39-45 kDa	

## Applications

<b>Tested Applications:</b> IF, WB, ELISA	<b>Positive Controls:</b>
<b>Species Specificity:</b> human, mouse	<b>WB:</b> HeLa cells, mouse liver tissue, PC-3 cells <b>IF:</b> HeLa cells,

## Background Information

ANKRD16, a vertebrate-specific protein that contains ankyrin repeats, binds directly to the catalytic domain of AlaRS. Serine that is misactivated by AlaRS is captured by the lysine side chains of ANKRD16, which prevents the charging of serine adenylates to tRNA<sup>Ala</sup> and precludes serine misincorporation in nascent peptides. The deletion of Ankrd16 in the brains of Aarssti/sti mice causes widespread protein aggregation and neuron loss (PMID: 29769718).

## Storage

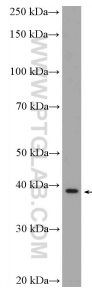
**Storage:**  
Store at -20°C. Stable for one year after shipment.  
**Storage Buffer:**  
PBS with 0.02% sodium azide and 50% glycerol pH 7.3.  
Aliquoting is unnecessary for -20°C storage

\*\*\* 20ul sizes contain 0.1% BSA

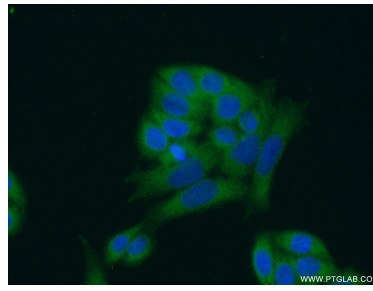
For technical support and original validation data for this product please contact:  
T: 1 (888) 4PTGLAB (1-888-478-4522) (toll free in USA), or 1(312) 455-8498 (outside USA)  
E: proteintech@ptglab.com  
W: ptglab.com

This product is exclusively available under Proteintech Group brand and is not available to purchase from any other manufacturer.

## Selected Validation Data



HeLa cells were subjected to SDS PAGE followed by western blot with 24334-1-AP (ANKRD16 Antibody) at dilution of 1:600 incubated at room temperature for 1.5 hours.



Immunofluorescent analysis of (-20°C Ethanol) fixed HeLa cells using 24334-1-AP (ANKRD16 antibody) at dilution of 1:50 and Alexa Fluor 488-conjugated AffiniPure Goat Anti-Rabbit IgG(H+L).