

For Research Use Only

# SGLT3/SLC5A4 Polyclonal antibody

Catalog Number: 24327-1-AP **3 Publications**



## Basic Information

<b>Catalog Number:</b> 24327-1-AP	<b>GenBank Accession Number:</b> BC153069	<b>Purification Method:</b> Antigen affinity purification
<b>Size:</b> 150ul, Concentration: 900 µg/ml by Nanodrop and 493 µg/ml by Bradford method using BSA as the standard;	<b>GeneID (NCBI):</b> 6527	<b>Recommended Dilutions:</b> WB 1:500-1:2000 IP 0.5-4.0 ug for IP and 1:500-1:1000 for WB
<b>Source:</b> Rabbit	<b>Full Name:</b> solute carrier family 5 (low affinity glucose cotransporter), member 4	<b>IHC 1:20-1:200</b>
<b>Isotype:</b> IgG	<b>Calculated MW:</b> 659 aa, 72 kDa	
<b>Immunogen Catalog Number:</b> AG19391	<b>Observed MW:</b> 60-70 kDa	

## Applications

<b>Tested Applications:</b> IHC, IP, WB, ELISA	<b>Positive Controls:</b> WB : mouse kidney tissue, IP : mouse kidney tissue, IHC : human kidney tissue,
<b>Cited Applications:</b> IF, IHC, WB	
<b>Species Specificity:</b> human, mouse, rat	
<b>Cited Species:</b> human, mouse	

**Note-IHC: suggested antigen retrieval with TE buffer pH 9.0; (\*) Alternatively, antigen retrieval may be performed with citrate buffer pH 6.0**

## Background Information

SLC5A4, also known as SGLT3, is a sugar sensor that depolarizes the plasma membrane in response to external glucose (PMID: 12748858, 20421923). SGLT3 mediates the influx of sodium ions into the cell but does not transport sugars, also potentially activated by imino sugars such as deoxynojirimycin (PMID: 22766068, 13130073). SGLT3 is a plasma membrane protein, shares 70% identity with SGLT1, and is expressed in the small intestine (cholinergic neurons), skeletal muscle, kidney, uterus, and testis (PMID: 12748858). SGLT3 protein at apparent molecular masses of 72 kDa and 80 kDa in human kidney tissue and HK-2 cells (PMID: 22766068).

## Notable Publications

Author	Pubmed ID	Journal	Application
Caterina Franco	34769857	Int J Environ Res Public Health	WB,IF
Matúš Soták	33385407	Life Sci	WB,IF
Emi Ono	29677207	PLoS One	IHC

## Storage

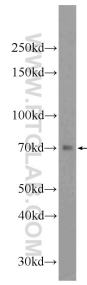
**Storage:**  
Store at -20°C. Stable for one year after shipment.  
**Storage Buffer:**  
PBS with 0.02% sodium azide and 50% glycerol pH 7.3.  
Aliquoting is unnecessary for -20°C storage

**\*\*\* 20ul sizes contain 0.1%BSA**

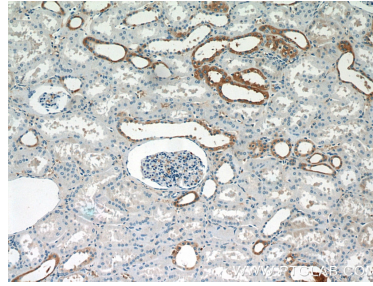
For technical support and original validation data for this product please contact:  
T: 1 (888) 4PTGLAB (1-888-478-4522) (toll free in USA), or 1(312) 455-8498 (outside USA)  
E: proteintech@ptglab.com  
W: ptglab.com

**This product is exclusively available under Proteintech Group brand and is not available to purchase from any other manufacturer.**

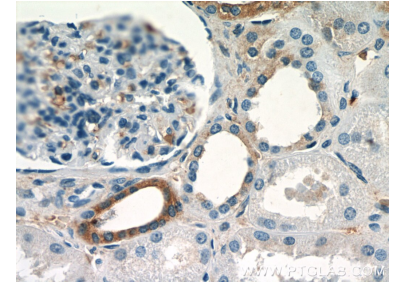
## Selected Validation Data



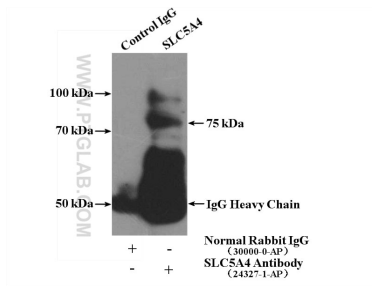
mouse kidney tissue were subjected to SDS PAGE followed by western blot with 24327-1-AP (SGLT3/SLC5A4 antibody at dilution of 1:1000 incubated at room temperature for 1.5 hours.



Immunohistochemical analysis of paraffin-embedded human kidney slide using 24327-1-AP (SGLT3/SLC5A4 antibody at dilution of 1:50.



Immunohistochemical analysis of paraffin-embedded human kidney slide using 24327-1-AP (SGLT3/SLC5A4 antibody at dilution of 1:50.



IP Result of anti-SGLT3/SLC5A4 (IP:24327-1-AP, 4ug; Detection:24327-1-AP 1:500) with mouse kidney tissue lysate 4000ug.