

For Research Use Only

# ISLR Polyclonal antibody

Catalog Number: 24306-1-AP



## Basic Information

<b>Catalog Number:</b> 24306-1-AP	<b>GenBank Accession Number:</b> BC022478	<b>Purification Method:</b> Antigen affinity purification
<b>Size:</b> 150ul , Concentration: 800 µg/ml by Nanodrop;	<b>GeneID (NCBI):</b> 3671	<b>Recommended Dilutions:</b> WB 1:500-1:1000
<b>Source:</b> Rabbit	<b>Full Name:</b> immunoglobulin superfamily containing leucine-rich repeat	
<b>Isotype:</b> IgG	<b>Calculated MW:</b> 428 aa, 46 kDa	
<b>Immunogen Catalog Number:</b> AG19446	<b>Observed MW:</b> 44-46 kDa	

## Applications

<b>Tested Applications:</b> WB, ELISA	<b>Positive Controls:</b> WB : NIH/3T3 cells, mouse retina tissue
<b>Species Specificity:</b> mouse	

## Background Information

The Immunoglobulin superfamily containing leucine-rich repeat protein (ISLR), is involved in various biological events, such as embryonic development, Gaucher's disease, and replicative senescence of fibroblasts in some organs, including the heart, pancreas, and bone marrow. ISLR, also known as meflin, is a newly discovered marker of mesenchymal stem cells, which is involved in pathological fibrosis and the cancer microenvironment. (PMID: 34713300)

## Storage

**Storage:**  
Store at -20°C. Stable for one year after shipment.  
**Storage Buffer:**  
PBS with 0.02% sodium azide and 50% glycerol pH 7.3.  
**Aliquoting is unnecessary for -20°C storage**

\*\*\* 20ul sizes contain 0.1% BSA

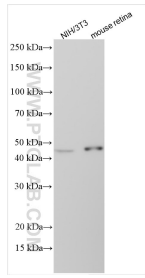
For technical support and original validation data for this product please contact:

T: 1 (888) 4PTGLAB (1-888-478-4522) (toll free in USA), or 1(312) 455-8498 (outside USA)

E: [proteintech@ptglab.com](mailto:proteintech@ptglab.com)  
W: [ptglab.com](http://ptglab.com)

This product is exclusively available under Proteintech Group brand and is not available to purchase from any other manufacturer.

## Selected Validation Data



Various lysates were subjected to SDS PAGE followed by western blot with 24306-1-AP (ISLR antibody) at dilution of 1:600 incubated at room temperature for 1.5 hours.