

For Research Use Only

SIL1 Polyclonal antibody

Catalog Number: 24110-1-AP **2 Publications**



Basic Information

Catalog Number: 24110-1-AP	GenBank Accession Number: BC011568	Purification Method: Antigen Affinity purified
Size: 150ul , Concentration: 800 µg/ml by Nanodrop;	GeneID (NCBI): 64374	Recommended Dilutions: WB 1:1000-1:4000 IHC 1:20-1:200 IF 1:10-1:100
Source: Rabbit	Full Name: SIL1 homolog, endoplasmic reticulum chaperone (S. cerevisiae)	
Isotype: IgG	Calculated MW: 52 kDa	
Immunogen Catalog Number: AG21367	Observed MW: 52 kDa	

Applications

Tested Applications:

IF, IHC, WB, ELISA

Cited Applications:

WB

Species Specificity:

human, mouse, rat

Cited Species:

human, mouse

Note-IHC: suggested antigen retrieval with TE buffer pH 9.0; (*) Alternatively, antigen retrieval may be performed with citrate buffer pH 6.0

Positive Controls:

WB: L02 cells, mouse kidney tissue, mouse liver tissue, rat liver tissue

IHC: human kidney tissue, mouse colon tissue, mouse testis tissue

IF: HepG2 cells,

Background Information

Notable Publications

Author	Pubmed ID	Journal	Application
Francesca Potenza	34830330	Int J Mol Sci	WB
Viraj P Ichhaporia	25473114	Mol Biol Cell	WB

Storage

Storage:

Store at -20°C. Stable for one year after shipment.

Storage Buffer:

PBS with 0.02% sodium azide and 50% glycerol pH 7.3.

Aliquoting is unnecessary for -20°C storage

***** 20ul sizes contain 0.1% BSA**

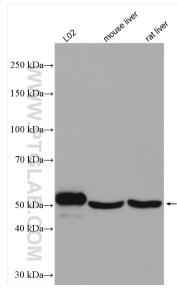
For technical support and original validation data for this product please contact:

T: 1 (888) 4PTGLAB (1-888-478-4522) (toll free in USA), or 1(312) 455-8498 (outside USA)

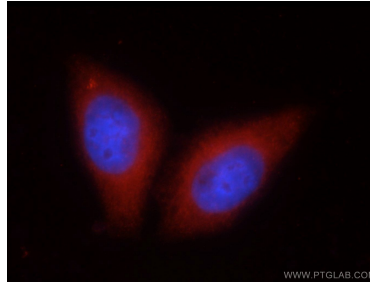
E: proteintech@ptglab.com
W: ptglab.com

This product is exclusively available under Proteintech Group brand and is not available to purchase from any other manufacturer.

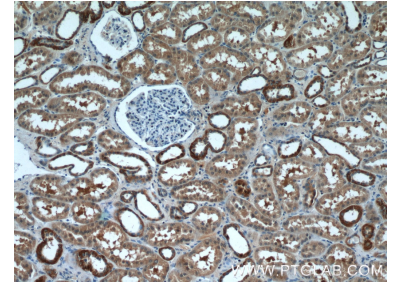
Selected Validation Data



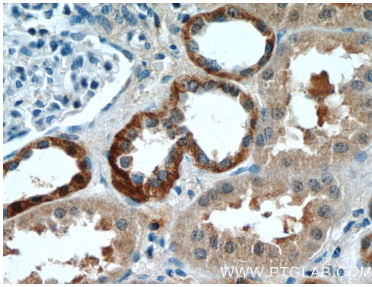
Various lysates were subjected to SDS PAGE followed by western blot with 24110-1-AP (SIL1 antibody) at dilution of 1:2000 incubated at room temperature for 1.5 hours.



Immunofluorescent analysis of HepG2 cells using 24110-1-AP (SIL1 antibody) at dilution of 1:25 and Rhodamine-Goat anti-Rabbit IgG.



Immunohistochemical analysis of paraffin-embedded human kidney tissue slide using 24110-1-AP (SIL1 Antibody) at dilution of 1:50 (under 10x lens).



Immunohistochemical analysis of paraffin-embedded human kidney tissue slide using 24110-1-AP (SIL1 Antibody) at dilution of 1:50 (under 40x lens).