

For Research Use Only

CXorf56 Polyclonal antibody

Catalog Number: 24021-1-AP **3 Publications**



Basic Information

Catalog Number: 24021-1-AP	GenBank Accession Number: BC023506	Purification Method: Antigen Affinity purified
Size: 150ul , Concentration: 600 µg/ml by Nanodrop and 280 µg/ml by Bradford method using BSA as the standard;	GeneID (NCBI): 63932	Recommended Dilutions: WB 1:500-1:2000 IP 0.5-4.0 ug for IP and 1:500-1:2000
Source: Rabbit	Full Name: chromosome X open reading frame 56	for WB IF 1:20-1:200
Isotype: IgG	Calculated MW: 222 aa, 26 kDa	
Immunogen Catalog Number: AG19856	Observed MW: 26-30 kDa	

Applications

Tested Applications: IF, IP, WB, ELISA	Positive Controls:
Cited Applications: IP, WB	WB : HeLa cells, HEK-293 cells, mouse kidney tissue
Species Specificity: human, mouse	IP : mouse kidney tissue,
Cited Species: human, monkey	IF : HeLa cells,

Background Information

CxORF56 (also known as STEEP) is an evolutionarily highly conserved protein whose function is unknown. Recently CxORF56 has been identified as a protein that interacts with STING, and it is essential for STING ER exit. CxORF56-dependent STING ER exit is essential for STING signaling in antiviral defense and in inflammatory diseases.

Notable Publications

Author	Pubmed ID	Journal	Application
Thaneas Prabakaran	33813142	EBioMedicine	WB
Ying Zhu	37156759	NPJ Breast Cancer	WB, IP
Feifei Diao	37039642	J Virol	WB

Storage

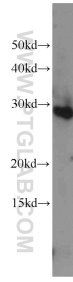
Storage:
Store at -20°C. Stable for one year after shipment.
Storage Buffer:
PBS with 0.02% sodium azide and 50% glycerol pH 7.3.
Aliquoting is unnecessary for -20°C storage

*** 20ul sizes contain 0.1% BSA

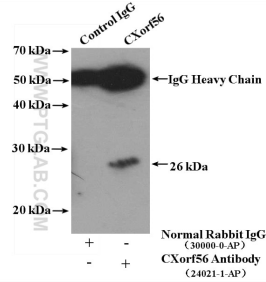
For technical support and original validation data for this product please contact:
T: 1 (888) 4PTGLAB (1-888-478-4522) (toll free in USA), or 1(312) 455-8498 (outside USA)
E: proteintech@ptglab.com
W: ptglab.com

This product is exclusively available under Proteintech Group brand and is not available to purchase from any other manufacturer.

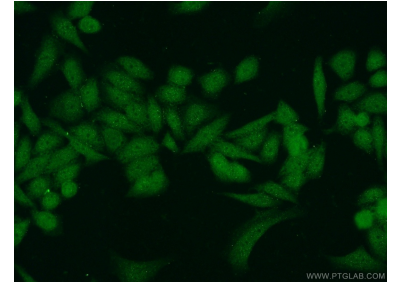
Selected Validation Data



HeLa cells were subjected to SDS PAGE followed by western blot with 24021-1-AP (CXorf56 antibody) at dilution of 1:1000 incubated at room temperature for 1.5 hours.



IP Result of anti-CXorf56 (IP:24021-1-AP, 4ug; Detection:24021-1-AP 1:1000) with mouse kidney tissue lysate 8000ug.



Immunofluorescent analysis of HeLa cells using 24021-1-AP (CXorf56 antibody) at dilution of 1:50 and Alexa Fluor 488-conjugated AffiniPure Goat Anti-Rabbit IgG(H+L).