

For Research Use Only

# LY6H Polyclonal antibody

Catalog Number: 23933-1-AP



## Basic Information

<b>Catalog Number:</b> 23933-1-AP	<b>GenBank Accession Number:</b> BC028894	<b>Purification Method:</b> Antigen Affinity purified
<b>Size:</b> 150ul , Concentration: 400 µg/ml by Nanodrop and 300 µg/ml by Bradford method using BSA as the standard;	<b>GeneID (NCBI):</b> 4062	<b>Recommended Dilutions:</b> WB 1:500-1:1000 IHC 1:20-1:200
<b>Source:</b> Rabbit	<b>Full Name:</b> Lymphocyte antigen 6 complex, locus H	
<b>Isotype:</b> IgG	<b>Calculated MW:</b> 15 kDa	
<b>Immunogen Catalog Number:</b> AG20762	<b>Observed MW:</b> 16 kDa	

## Applications

<b>Tested Applications:</b> IHC, WB, ELISA	<b>Positive Controls:</b>
<b>Species Specificity:</b> human, mouse	<b>WB :</b> Raji cells, <b>IHC :</b> human testis tissue, mouse brain tissue

**Note-IHC: suggested antigen retrieval with TE buffer pH 9.0; (\*) Alternatively, antigen retrieval may be performed with citrate buffer pH 6.0**

## Background Information

LY6H is highly expressed in particular subdivisions of human brain and also in MOLT-3 and -4 acute lymphoblastic leukemia cells. It has some isoforms with MW 14-16 kDa.

## Storage

**Storage:**  
Store at -20°C. Stable for one year after shipment.  
**Storage Buffer:**  
PBS with 0.02% sodium azide and 50% glycerol pH 7.3.  
Aliquoting is unnecessary for -20°C storage

\*\*\* 20ul sizes contain 0.1% BSA

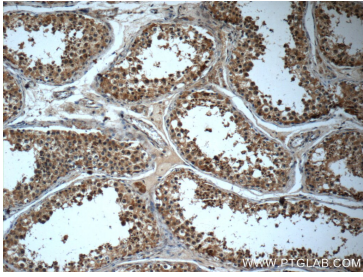
For technical support and original validation data for this product please contact:

T: 1 (888) 4PTGLAB (1-888-478-4522) (toll free in USA), or 1(312) 455-8498 (outside USA)

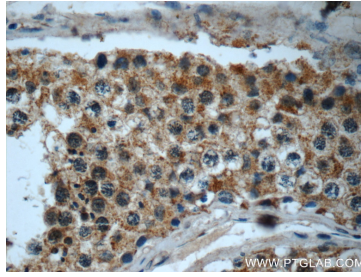
E: proteintech@ptglab.com  
W: ptglab.com

This product is exclusively available under Proteintech Group brand and is not available to purchase from any other manufacturer.

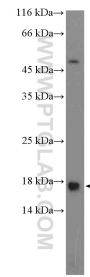
## Selected Validation Data



Immunohistochemical analysis of paraffin-embedded human testis slide using 23933-1-AP (LY6H Antibody) at dilution of 1:50 (under 10x lens).



Immunohistochemical analysis of paraffin-embedded human testis slide using 23933-1-AP (LY6H Antibody) at dilution of 1:50 (under 40x lens).



Raji cells were subjected to SDS PAGE followed by western blot with 23933-1-AP (LY6H Antibody) at dilution of 1:600 incubated at room temperature for 1.5 hours.