

For Research Use Only

MRPL33 Polyclonal antibody

Catalog Number: 23870-1-AP



Basic Information

| | | |
|--|--|--|
| Catalog Number: 23870-1-AP | GenBank Accession Number: BC009475 | Purification Method: Antigen Affinity purified |
| Size: 150ul , Concentration: 600 µg/ml by Nanodrop and 367 µg/ml by Bradford method using BSA as the standard; | GeneID (NCBI): 9553 | Recommended Dilutions: IHC 1:50-1:500 IF 1:10-1:100 |
| Source: Rabbit | Full Name: mitochondrial ribosomal protein L33 | |
| Isotype: IgG | Calculated MW: 65 aa, 8 kDa | |
| Immunogen Catalog Number: AG20921 | | |

Applications

| | |
|--|--|
| Tested Applications: IF, IHC, ELISA | Positive Controls: IHC : human kidney tissue, IF : HepG2 cells, |
| Species Specificity: human | |
| Note-IHC: suggested antigen retrieval with TE buffer pH 9.0; (*) Alternatively, antigen retrieval may be performed with citrate buffer pH 6.0 | |

Background Information

MRPL33 is a mitochondrial ribosomal protein. Mammalian mitochondrial ribosomal proteins are encoded by nuclear genes and help in protein synthesis within the mitochondrion.

Storage

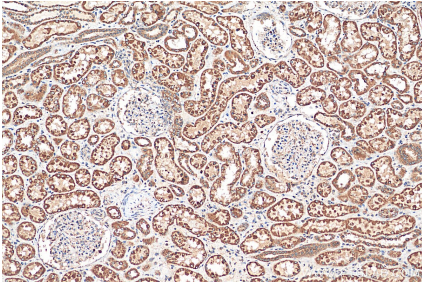
Storage:
Store at -20°C. Stable for one year after shipment.
Storage Buffer:
PBS with 0.02% sodium azide and 50% glycerol pH 7.3.
Aliquoting is unnecessary for -20°C storage

*** 20ul sizes contain 0.1% BSA

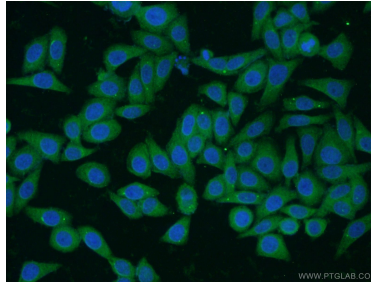
For technical support and original validation data for this product please contact:
T: 1 (888) 4PTGLAB (1-888-478-4522) (toll free in USA), or 1(312) 455-8498 (outside USA)
E: proteintech@ptglab.com
W: ptglab.com

This product is exclusively available under Proteintech Group brand and is not available to purchase from any other manufacturer.

Selected Validation Data



Immunohistochemical analysis of paraffin-embedded human kidney tissue slide using 23870-1-AP (MRPL33 antibody) at dilution of 1:200 (under 10x lens). Heat mediated antigen retrieval with Tris-EDTA buffer (pH 9.0).



Immunofluorescent analysis of HepG2 cells using 23870-1-AP (MRPL33 antibody) at dilution of 1:25 and Alexa Fluor 488-conjugated AffiniPure Goat Anti-Rabbit IgG(H+L).