

For Research Use Only

LYRM7 Polyclonal antibody

Catalog Number: 23833-1-AP



Basic Information

Catalog Number: 23833-1-AP	GenBank Accession Number: BC047079	Purification Method: Antigen Affinity purified
Size: 150ul , Concentration: 700 µg/ml by Nanodrop and 340 µg/ml by Bradford method using BSA as the standard;	GeneID (NCBI): 90624	Recommended Dilutions: IHC 1:20-1:200 IF 1:10-1:100
Source: Rabbit	Full Name: Lyrm7 homolog (mouse)	
Isotype: IgG	Calculated MW: 104 aa, 12 kDa	
Immunogen Catalog Number: AG20696		

Applications

Tested Applications: FC, IF, IHC, ELISA	Positive Controls:
Species Specificity: human	IHC: human liver tissue, human hepatocirrhosis tissue, human kidney tissue
Note-IHC: <i>suggested antigen retrieval with TE buffer pH 9.0; (*) Alternatively, antigen retrieval may be performed with citrate buffer pH 6.0</i>	IF: HepG2 cells,

Background Information

Storage

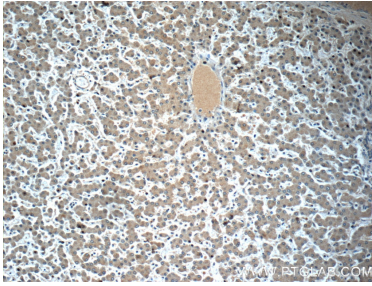
Storage:
Store at -20°C. Stable for one year after shipment.
Storage Buffer:
PBS with 0.02% sodium azide and 50% glycerol pH 7.3.
Aliquoting is unnecessary for -20°C storage

*** 20ul sizes contain 0.1% BSA

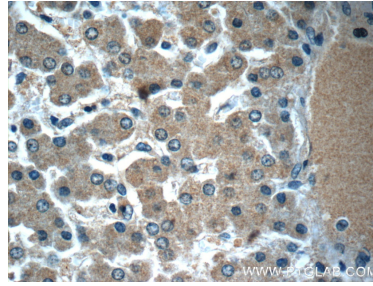
For technical support and original validation data for this product please contact:
T: 1 (888) 4PTGLAB (1-888-478-4522) (toll free in USA), or 1(312) 455-8498 (outside USA) E: proteintech@ptglab.com
W: ptglab.com

This product is exclusively available under Proteintech Group brand and is not available to purchase from any other manufacturer.

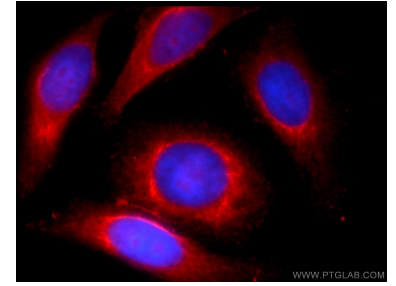
Selected Validation Data



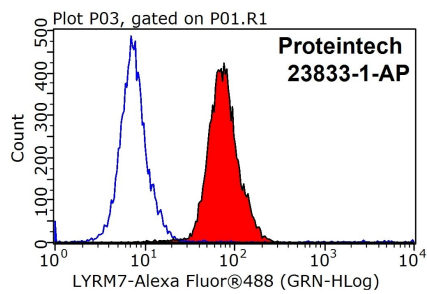
Immunohistochemical analysis of paraffin-embedded human liver slide using 23833-1-AP (LYRM7 Antibody) at dilution of 1:50 (under 10x lens).



Immunohistochemical analysis of paraffin-embedded human liver slide using 23833-1-AP (LYRM7 Antibody) at dilution of 1:50 (under 40x lens).



Immunofluorescent analysis of HepG2 cells using 23833-1-AP (LYRM7 antibody) at dilution of 1:25 and Rhodamine-Goat anti-Rabbit IgG.



1X10⁶ HepG2 cells were stained with .2ug LYRM7 antibody (23833-1-AP, red) and control antibody (blue). Fixed with 90% MeOH blocked with 3% BSA (30 min). Alexa Fluor 488-conjugated AffiniPure Goat Anti-Rabbit IgG(H+L) with dilution 1:1000.