

For Research Use Only

ANGPTL8/Betatrophin Polyclonal antibody



Catalog Number: 23792-1-AP

1 Publications

Basic Information

Catalog Number: 23792-1-AP	GenBank Accession Number: BC146552	Purification Method: Antigen affinity purification
Size: 150ul , Concentration: 600 µg/ml by Nanodrop and 400 µg/ml by Bradford method using BSA as the standard;	GeneID (NCBI): 55908	Recommended Dilutions: IHC 1:20-1:200
Source: Rabbit	Full Name: hepatocellular carcinoma-associated gene TD26	
Isotype: IgG	Calculated MW: 251 aa, 28 kDa	
Immunogen Catalog Number: AG20698		

Applications

Tested Applications: IHC, ELISA	Positive Controls: IHC : human liver cancer tissue, human liver tissue
Cited Applications: WB	
Species Specificity: human, mouse	
Cited Species: mouse	
Note-IHC: suggested antigen retrieval with TE buffer pH 9.0; (*) Alternatively, antigen retrieval may be performed with citrate buffer pH 6.0	

Background Information

Notable Publications

Author	Pubmed ID	Journal	Application
Qi Guo	36142528	Int J Mol Sci	WB

Storage

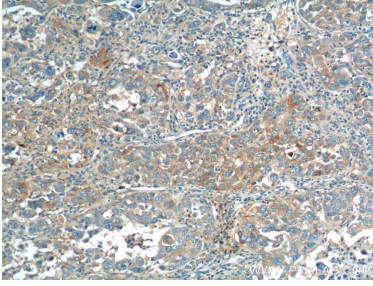
Storage:
Store at -20°C. Stable for one year after shipment.
Storage Buffer:
PBS with 0.02% sodium azide and 50% glycerol pH 7.3.
Aliquoting is unnecessary for -20°C storage

*** 20ul sizes contain 0.1% BSA

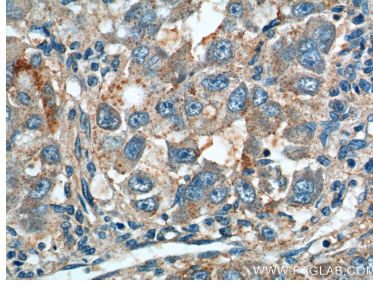
For technical support and original validation data for this product please contact:
T: 1 (888) 4PTGLAB (1-888-478-4522) (toll free in USA), or 1(312) 455-8498 (outside USA) E: proteintech@ptglab.com W: ptglab.com

This product is exclusively available under Proteintech Group brand and is not available to purchase from any other manufacturer.

Selected Validation Data



Immunohistochemical analysis of paraffin-embedded human liver cancer tissue slide using 23792-1-AP (ANGPTL8/Betatrophin antibody at dilution of 1:200) (under 10x lens).



Immunohistochemical analysis of paraffin-embedded human liver cancer tissue slide using 23792-1-AP (ANGPTL8/Betatrophin antibody at dilution of 1:200) (under 40x lens).