

For Research Use Only

# P15RS Polyclonal antibody

Catalog Number: 23652-1-AP

Featured Product

3 Publications



## Basic Information

**Catalog Number:**

23652-1-AP

**Size:**

150ul, Concentration: 800 µg/ml by Nanodrop;

**Source:**

Rabbit

**Isotype:**

IgG

**Immunogen Catalog Number:**

AG20409

**GenBank Accession Number:**

BC010136

**GeneID (NCBI):**

55197

**UNIPROT ID:**

Q96P16

**Full Name:**

regulation of nuclear pre-mRNA domain containing 1A

**Calculated MW:**

312 aa, 36 kDa

**Observed MW:**

36 kDa

**Purification Method:**

Antigen affinity purification

**Recommended Dilutions:**

WB 1:1000-1:6000

IF 1:50-1:500

## Applications

**Tested Applications:**

IF, WB, ELISA

**Cited Applications:**

IF, IHC, IP, WB

**Species Specificity:**

human, mouse

**Cited Species:**

human

**Positive Controls:**

**WB:** A431 cells, mouse liver tissue, mouse skeletal muscle tissue, L02 cells, Jurkat cells, HEK-293 cells

**IF:** HeLa cells, HepG2 cells

## Background Information

RPRD1A is upregulated in cells overexpressing cyclin-dependent kinase inhibitor p15(INK4b) and may have a role in cell cycle regulation. It contains a RAR domain that is involved in regulation of nuclear pre-mRNA, which suggests that P15RS may act as a nuclear regulation protein [PMID:12470661]. It also interacts with phosphorylated C-terminal heptapeptide repeat domain (CTD) of the largest RNA polymerase II subunit POLR2A, and participates in dephosphorylation of the CTD. Besides, RPRD1A regulates cell cycle genes and attenuates WNT signaling [PMID:20739273], and acts as a negative regulator of cyclin-D1 (CCND1) and cyclin-E (CCNE1) in the cell cycle [PMID:22231121].

## Notable Publications

Author	Pubmed ID	Journal	Application
Xiaoman Chen	30207732	Mol Pharm	WB
Simona Cugusi	36121223	Mol Cell Biol	WB
Xiaofan Feng	34921137	Cell Death Dis	IP,WB,IHC,IF

## Storage

**Storage:**

Store at -20°C. Stable for one year after shipment.

**Storage Buffer:**

PBS with 0.02% sodium azide and 50% glycerol pH 7.3.

Aliquoting is unnecessary for -20°C storage

\*\*\* 20ul sizes contain 0.1% BSA

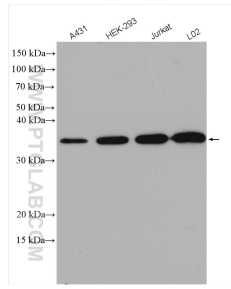
For technical support and original validation data for this product please contact:

T: 1 (888) 4PTGLAB (1-888-478-4522) (toll free in USA), or 1(312) 455-8498 (outside USA)

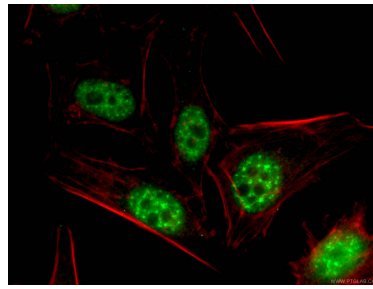
E: proteintech@ptglab.com  
W: ptglab.com

This product is exclusively available under Proteintech Group brand and is not available to purchase from any other manufacturer.

## Selected Validation Data



Various lysates were subjected to SDS PAGE followed by western blot with 23652-1-AP (P15RS antibody) at dilution of 1:3000 incubated at room temperature for 1.5 hours.



Immunofluorescent analysis of (4% PFA) fixed HeLa cells using 23652-1-AP (P15RS antibody), at dilution of 1:200 and Coralite@488-Conjugated AffiniPure Goat Anti-Rabbit IgG(H+L).