

For Research Use Only

TIMMDC1 Polyclonal antibody

Catalog Number: 23622-1-AP **1 Publications**



Basic Information

Catalog Number: 23622-1-AP	GenBank Accession Number: BC012341	Purification Method: Antigen Affinity purified
Size: 150ul , Concentration: 600 µg/ml by Nanodrop and 400 µg/ml by Bradford method using BSA as the standard;	GeneID (NCBI): 51300	Recommended Dilutions: WB 1:500-1:2000
Source: Rabbit	Full Name: chromosome 3 open reading frame 1	
Isotype: IgG	Calculated MW: 285 aa, 32 kDa	
Immunogen Catalog Number: AG20017	Observed MW: 32-35 kDa	

Applications

Tested Applications: WB,ELISA	Positive Controls: WB : A375 cells,
Cited Applications: WB	
Species Specificity: human	
Cited Species: human	

Background Information

Notable Publications

Author	Pubmed ID	Journal	Application
Bruna Rodrigues Muys	31101765	Cancer Res	WB

Storage

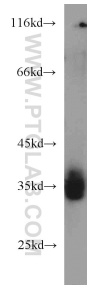
Storage:
Store at -20°C. Stable for one year after shipment.
Storage Buffer:
PBS with 0.02% sodium azide and 50% glycerol pH 7.3.
Aliquoting is unnecessary for -20°C storage

***** 20ul sizes contain 0.1% BSA**

For technical support and original validation data for this product please contact:
T: 1 (888) 4PTGLAB (1-888-478-4522) (toll free in USA), or 1(312) 455-8498 (outside USA)
E: proteintech@ptglab.com
W: ptglab.com

This product is exclusively available under Proteintech Group brand and is not available to purchase from any other manufacturer.

Selected Validation Data



A375 cells were subjected to SDS PAGE followed by western blot with 23622-1-AP (TIMMDC1 antibody) at dilution of 1:1000 incubated at room temperature for 1.5 hours.