

For Research Use Only

ESCO2 Polyclonal antibody

Catalog Number: 23525-1-AP **1 Publications**



Basic Information

Catalog Number: 23525-1-AP	GenBank Accession Number: BC146562	Purification Method: Antigen Affinity purified
Size: 150ul , Concentration: 550 µg/ml by Nanodrop and 307 µg/ml by Bradford method using BSA as the standard;	GeneID (NCBI): 157570	Recommended Dilutions: WB 1:500-1:3000
Source: Rabbit	Full Name: establishment of cohesion 1 homolog 2 (S. cerevisiae)	
Isotype: IgG	Calculated MW: 601 aa, 68 kDa	
Immunogen Catalog Number: AG18893	Observed MW: 65-70 kDa	

Applications

Tested Applications: WB, ELISA	Positive Controls: WB : HeLa cells, HepG2 cells, mouse testis, rat testis
Cited Applications: WB	
Species Specificity: human, mouse, rat	
Cited Species: human	

Background Information

Notable Publications

Author	Pubmed ID	Journal	Application
Gang Zhang	35258173	Kaohsiung J Med Sci	WB

Storage

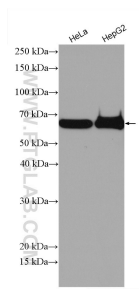
Storage:
Store at -20°C. Stable for one year after shipment.
Storage Buffer:
PBS with 0.02% sodium azide and 50% glycerol pH 7.3.
Aliquoting is unnecessary for -20°C storage

***** 20ul sizes contain 0.1% BSA**

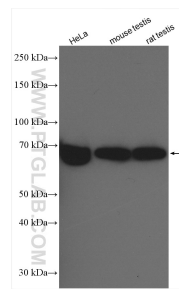
For technical support and original validation data for this product please contact:
T: 1 (888) 4PTGLAB (1-888-478-4522) (toll free in USA), or 1(312) 455-8498 (outside USA)
E: proteintech@ptglab.com
W: ptglab.com

This product is exclusively available under Proteintech Group brand and is not available to purchase from any other manufacturer.

Selected Validation Data



Various lysates were subjected to SDS PAGE followed by western blot with 23525-1-AP (ESCO2 antibody) at dilution of 1:2000 incubated at room temperature for 1.5 hours.



Various lysates were subjected to SDS PAGE followed by western blot with 23525-1-AP (ESCO2 antibody) at dilution of 1:1500 incubated at room temperature for 1.5 hours.