

For Research Use Only

# GPR39 Polyclonal antibody

Catalog Number: 23326-1-AP **1 Publications**



## Basic Information

<b>Catalog Number:</b> 23326-1-AP	<b>GenBank Accession Number:</b> BC125046	<b>Purification Method:</b> Antigen affinity purification
<b>Size:</b> 150ul , Concentration: 600 µg/ml by Nanodrop and 320 µg/ml by Bradford method using BSA as the standard;	<b>GeneID (NCBI):</b> 2863	<b>Recommended Dilutions:</b> IHC 1:50-1:500
<b>Source:</b> Rabbit	<b>Full Name:</b> G protein-coupled receptor 39	
<b>Isotype:</b> IgG	<b>Calculated MW:</b> 453 aa, 51 kDa	
<b>Immunogen Catalog Number:</b> AG19913		

## Applications

<b>Tested Applications:</b> IHC, ELISA	<b>Positive Controls:</b> IHC : human small intestine tissue,
<b>Cited Applications:</b> WB	
<b>Species Specificity:</b> human	
<b>Cited Species:</b> mouse	
<b>Note-IHC: suggested antigen retrieval with TE buffer pH 9.0; (*) Alternatively, antigen retrieval may be performed with citrate buffer pH 6.0</b>	

## Background Information

GPR39 (G protein-coupled receptor 39), a member of the ghrelin family of G protein-coupled receptors, is zinc-responsive and contributes to the regulation of diverse neurovascular and neurologic functions (PMID: 34360964). GPR39 has relatively high ligand-independent constitutive activity, based on an aromatic cluster on the inner face of the extracellular ends of TM domains VI and VII, similar to other members of the ghrelin receptor family (PMID: 33918078).

## Notable Publications

Author	Pubmed ID	Journal	Application
Panpan Yang	35953014	Int J Biochem Cell Biol	WB

## Storage

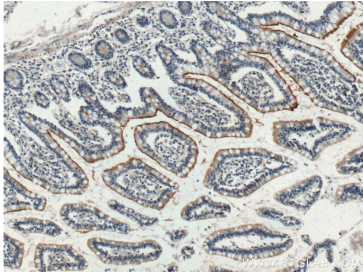
**Storage:**  
Store at -20°C. Stable for one year after shipment.  
**Storage Buffer:**  
PBS with 0.02% sodium azide and 50% glycerol pH 7.3.  
Aliquoting is unnecessary for -20°C storage

\*\*\* 20ul sizes contain 0.1% BSA

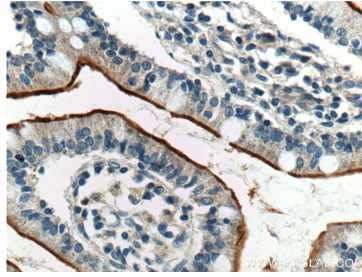
For technical support and original validation data for this product please contact:  
T: 1 (888) 4PTGLAB (1-888-478-4522) (toll free in USA), or 1(312) 455-8498 (outside USA)  
E: proteintech@ptglab.com  
W: ptglab.com

This product is exclusively available under Proteintech Group brand and is not available to purchase from any other manufacturer.

## Selected Validation Data



Immunohistochemical analysis of paraffin-embedded human small intestine tissue slide using 23326-1-AP (GPR39 Antibody) at dilution of 1:200 (under 10x lens).



Immunohistochemical analysis of paraffin-embedded human small intestine tissue slide using 23326-1-AP (GPR39 Antibody) at dilution of 1:200 (under 40x lens).