

For Research Use Only

MTERFD1 Polyclonal antibody

Catalog Number: 23296-1-AP **1 Publications**



Basic Information

Catalog Number: 23296-1-AP	GenBank Accession Number: BC012995	Purification Method: Antigen affinity purification
Size: 150ul , Concentration: 550 µg/ml by Nanodrop and 333 µg/ml by Bradford method using BSA as the standard;	GeneID (NCBI): 51001	Recommended Dilutions: WB 1:500-1:2000
Source: Rabbit	Full Name: MTERF domain containing 1	
Isotype: IgG	Calculated MW: 417 aa, 48 kDa	
Immunogen Catalog Number: AG19847	Observed MW: 48 kDa	

Applications

Tested Applications: WB, ELISA	Positive Controls: WB : mouse liver tissue, HeLa cells
Cited Applications: IF, WB	
Species Specificity: human, mouse	
Cited Species: mouse, canine	

Background Information

Notable Publications

Author	Pubmed ID	Journal	Application
Wanyue Sang	37346800	J Inflamm Res	IF, WB

Storage

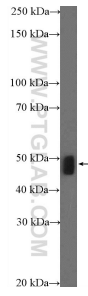
Storage:
Store at -20°C. Stable for one year after shipment.
Storage Buffer:
PBS with 0.02% sodium azide and 50% glycerol pH 7.3.
Aliquoting is unnecessary for -20°C storage

*** 20ul sizes contain 0.1% BSA

For technical support and original validation data for this product please contact:
T: 1 (888) 4PTGLAB (1-888-478-4522) (toll free in USA), or 1(312) 455-8498 (outside USA)
E: proteintech@ptglab.com
W: ptglab.com

This product is exclusively available under Proteintech Group brand and is not available to purchase from any other manufacturer.

Selected Validation Data



mouse liver tissue were subjected to SDS PAGE followed by western blot with 23296-1-AP (MTERFD1 Antibody) at dilution of 1:1000 incubated at room temperature for 1.5 hours.