

For Research Use Only

ERVWE1 Polyclonal antibody

Catalog Number: 23172-1-AP



Basic Information

Catalog Number: 23172-1-AP	GenBank Accession Number: BC137381	Purification Method: Antigen affinity purification
Size: 150ul , Concentration: 220 µg/ml by Nanodrop and 180 µg/ml by Bradford method using BSA as the standard;	GeneID (NCBI): 30816	Recommended Dilutions: WB 1:500-1:1000
Source: Rabbit	Full Name: endogenous retroviral family W, env(C7), member 1	
Isotype: IgG	Calculated MW: 538 aa, 60 kDa	
Immunogen Catalog Number: AG19227	Observed MW: 70-73 kDa	

Applications

Tested Applications: WB, ELISA	Positive Controls: WB : mouse testis tissue, rat testis tissue
Species Specificity: human, mouse, rat	

Background Information

ERVWE1 encodes a 538 amino-acid, 73-kDa glycosylated (60 kDa unglycosylated) envelope protein, Syncytin-1. It is expressed in the placental syncytiotrophoblast and participates in syncytium formation during placenta morphogenesis. Mounting evidence suggests that aberrant expression of ERVWE1 involves the etiology of schizophrenia.

Storage

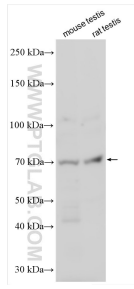
Storage:
Store at -20°C. Stable for one year after shipment.
Storage Buffer:
PBS with 0.02% sodium azide and 50% glycerol pH 7.3.
Aliquoting is unnecessary for -20°C storage

*** 20ul sizes contain 0.1% BSA

For technical support and original validation data for this product please contact:
T: 1 (888) 4PTGLAB (1-888-478-4522) (toll free in USA), or 1(312) 455-8498 (outside USA) E: proteintech@ptglab.com W: ptglab.com

This product is exclusively available under Proteintech Group brand and is not available to purchase from any other manufacturer.

Selected Validation Data



Various lysates were subjected to SDS PAGE followed by western blot with 23172-1-AP (ERVWE1 antibody) at dilution of 1:500 incubated at room temperature for 1.5 hours.