

For Research Use Only

ESRP2 Polyclonal antibody

Catalog Number: 23117-1-AP **1 Publications**



Basic Information

Catalog Number: 23117-1-AP	GenBank Accession Number: BC030146	Purification Method: Antigen affinity purification
Size: 150ul , Concentration: 300 µg/ml by Nanodrop and 207 µg/ml by Bradford method using BSA as the standard;	GeneID (NCBI): 80004	Recommended Dilutions: WB 1:200-1:1000 IHC 1:50-1:500
Source: Rabbit	Full Name: epithelial splicing regulatory protein 2	
Isotype: IgG	Calculated MW: 727 aa, 78 kDa	
Immunogen Catalog Number: AG19436	Observed MW: 78 kDa	

Applications

Tested Applications: IHC, WB, ELISA	Positive Controls: WB : A431 cells, HeLa cells, HepG2 cells IHC : human breast cancer tissue,
Species Specificity: human, mouse	
Cited Species: human	
Note-IHC: suggested antigen retrieval with TE buffer pH 9.0; (*) Alternatively, antigen retrieval may be performed with citrate buffer pH 6.0	

Background Information

ESRP2 (Epithelial Splicing Regulatory Protein 2), also known as RBM35B(RNA binding motif protein 35B), is a member of the heterogeneous nuclear ribonucleoprotein (hnRNP) family of RNA binding proteins. ESRP2 plays a role in the regulation of alternative splicing events of pre-mRNAs(PMID: 27401076). Overexpression of ESRP2 has been described in various malignant tumors, such as pancreatic ductal adenocarcinoma, oral squamous carcinoma, ovarian cancer, and luminal-type breast cancer(PMID: 33339518).

Notable Publications

Author	Pubmed ID	Journal	Application
Kalpiti Shah	32820253	Oncogene	

Storage

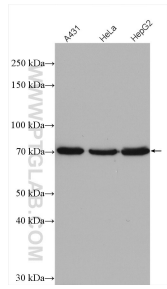
Storage:
Store at -20°C. Stable for one year after shipment.
Storage Buffer:
PBS with 0.02% sodium azide and 50% glycerol pH 7.3.
Aliquoting is unnecessary for -20°C storage

*** 20ul sizes contain 0.1% BSA

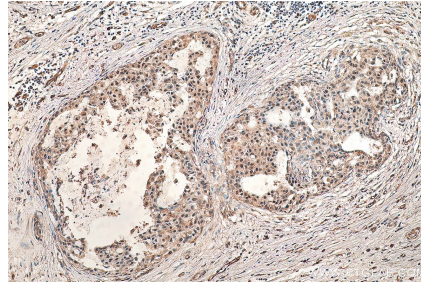
For technical support and original validation data for this product please contact:
T: 1 (888) 4PTGLAB (1-888-478-4522) (toll free in USA), or 1(312) 455-8498 (outside USA)
E: proteintech@ptglab.com
W: ptglab.com

This product is exclusively available under Proteintech Group brand and is not available to purchase from any other manufacturer.

Selected Validation Data



Various lysates were subjected to SDS PAGE followed by western blot with 23117-1-AP (ESRP2 antibody) at dilution of 1:300 incubated at room temperature for 1.5 hours.



Immunohistochemical analysis of paraffin-embedded human breast cancer tissue slide using 23117-1-AP (ESRP2 antibody) at dilution of 1:200 (under 10x lens). Heat mediated antigen retrieval with Tris-EDTA buffer (pH 9.0).