

For Research Use Only

# GDEP Polyclonal antibody

Catalog Number: 22744-1-AP



## Basic Information

<b>Catalog Number:</b> 22744-1-AP	<b>GenBank Accession Number:</b> BC125139	<b>Purification Method:</b> Antigen Affinity purified
<b>Size:</b> 150ul , Concentration: 240 µg/ml by Nanodrop and 133 µg/ml by Bradford method using BSA as the standard;	<b>GeneID (NCBI):</b> 118425	<b>Recommended Dilutions:</b> WB 1:500-1:2000 IHC 1:50-1:200 IF 1:20-1:200
<b>Source:</b> Rabbit	<b>Full Name:</b> gene differentially expressed in prostate	
<b>Isotype:</b> IgG	<b>Calculated MW:</b> 34 aa, 4 kDa	
<b>Immunogen Catalog Number:</b> AG19087	<b>Observed MW:</b> 4 kDa	

## Applications

### Tested Applications:

IF, IHC, WB, ELISA

### Species Specificity:

human

**Note-IHC: suggested antigen retrieval with TE buffer pH 9.0; (\*) Alternatively, antigen retrieval may be performed with citrate buffer pH 6.0**

### Positive Controls:

WB : PC-3 cells,

IHC : human prostate cancer tissue, human prostate hyperplasia tissue

IF : PC-3 cells,

## Background Information

### Storage

#### Storage:

Store at -20°C. Stable for one year after shipment.

#### Storage Buffer:

PBS with 0.02% sodium azide and 50% glycerol pH 7.3.

Aliquoting is unnecessary for -20°C storage

\*\*\* 20ul sizes contain 0.1% BSA

For technical support and original validation data for this product please contact:

T: 1 (888) 4PTGLAB (1-888-478-4522) (toll free in USA), or 1(312) 455-8498 (outside USA)

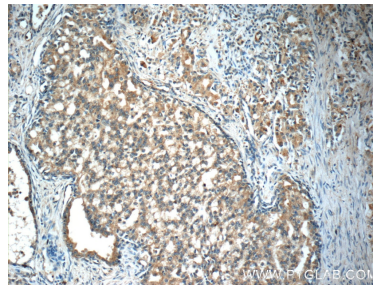
E: [proteintech@ptglab.com](mailto:proteintech@ptglab.com)  
W: [ptglab.com](http://ptglab.com)

This product is exclusively available under Proteintech Group brand and is not available to purchase from any other manufacturer.

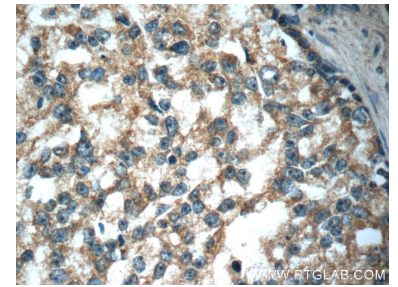
## Selected Validation Data



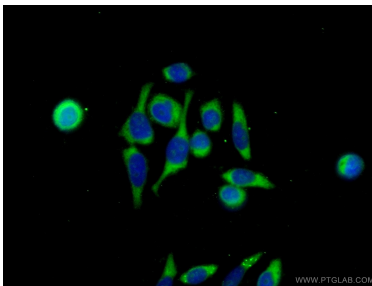
PC-3 cells were subjected to SDS PAGE followed by western blot with 22744-1-AP (GDEP antibody) at dilution of 1:1000 incubated at room temperature for 1.5 hours.



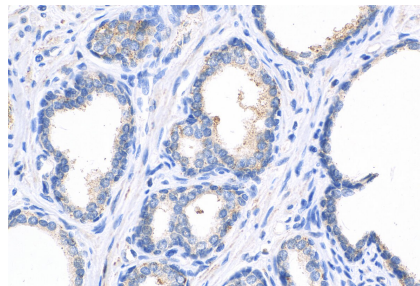
Immunohistochemical analysis of paraffin-embedded human prostate cancer slide using 22744-1-AP (GDEP Antibody) at dilution of 1:50. (under 10x lens).



Immunohistochemical analysis of paraffin-embedded human prostate cancer slide using 22744-1-AP (GDEP Antibody) at dilution of 1:50. (under 40x lens).



Immunofluorescent analysis of (-20°C Ethanol) fixed PC-3 cells using 22744-1-AP (GDEP antibody) at dilution of 1:50 and Alexa Fluor 488-conjugated AffiniPure Goat Anti-Rabbit IgG(H+L).



Immunohistochemical analysis of paraffin-embedded human prostate cancer tissue slide using 22744-1-AP (GDEP antibody) at dilution of 1:200 (under 40x lens). Heat mediated antigen retrieval with Tris-EDTA buffer (pH 9.0).