

For Research Use Only

# RNASEL Polyclonal antibody

Catalog Number: 22577-1-AP **7 Publications**



## Basic Information

<b>Catalog Number:</b> 22577-1-AP	<b>GenBank Accession Number:</b> BC115697	<b>Purification Method:</b> Antigen Affinity purified
<b>Size:</b> 150ul, Concentration: 400 µg/ml by Nanodrop and 293 µg/ml by Bradford method using BSA as the standard;	<b>GeneID (NCBI):</b> 6041	<b>Recommended Dilutions:</b> WB 1:1000-1:4000 IHC 1:20-1:200 IF 1:50-1:500
<b>Source:</b> Rabbit	<b>UNIPROT ID:</b> Q05823	
<b>Isotype:</b> IgG	<b>Full Name:</b> ribonuclease L (2',5'-oligoadenylate synthetase-dependent)	
<b>Immunogen Catalog Number:</b> AG17409	<b>Calculated MW:</b> 741 aa, 84 kDa	
	<b>Observed MW:</b> 84 kDa; 73 kDa	

## Applications

<b>Tested Applications:</b> WB, IF, IHC, ELISA	<b>Positive Controls:</b> WB: THP-1 cells, RAW 264.7 cells IHC: human tonsillitis tissue, human spleen tissue IF: HepG2 cells,
<b>Cited Applications:</b> wb, IF, ELISA	
<b>Species Specificity:</b> human, mouse	
<b>Cited Species:</b> human, rat, mouse	

**Note-IHC: suggested antigen retrieval with TE buffer pH 9.0; (\*) Alternatively, antigen retrieval may be performed with citrate buffer pH 6.0**

## Background Information

RNASEL, also named as RNS4, is an endoribonuclease that functions in the interferon (IFN) antiviral response. RNASEL mediated apoptosis is the result of a JNK-dependent stress-response pathway leading to cytochrome c release from mitochondria and caspase-dependent apoptosis. There're some isoforms with calculated MW 84 kDa and 73 kDa.

## Notable Publications

Author	Pubmed ID	Journal	Application
Zhuo Chen	34686338	Cell Rep	WB
Yajuan Fu	32283527	iScience	WB
Qixue Wang	31637166	Adv Sci (Weinh)	wb

## Storage

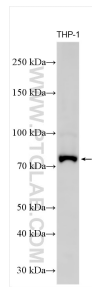
**Storage:**  
Store at -20°C. Stable for one year after shipment.  
**Storage Buffer:**  
PBS with 0.02% sodium azide and 50% glycerol pH 7.3.  
Aliquoting is unnecessary for -20°C storage

\*\*\* 20ul sizes contain 0.1% BSA

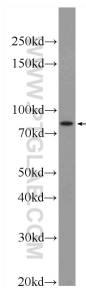
For technical support and original validation data for this product please contact:  
T: 1 (888) 4PTGLAB (1-888-478-4522) (toll free in USA), or 1(312) 455-8498 (outside USA)  
E: proteintech@ptglab.com  
W: ptglab.com

This product is exclusively available under Proteintech Group brand and is not available to purchase from any other manufacturer.

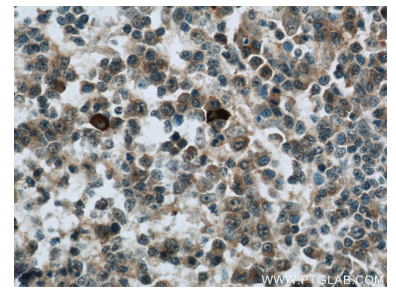
## Selected Validation Data



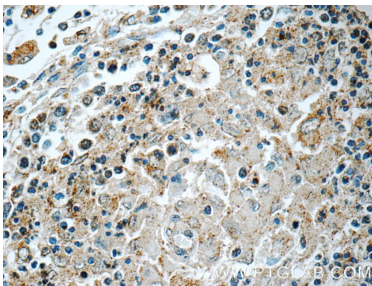
THP-1 cells were subjected to SDS PAGE followed by western blot with 22577-1-AP (RNASEL antibody) at dilution of 1:2000 incubated at room temperature for 1.5 hours.



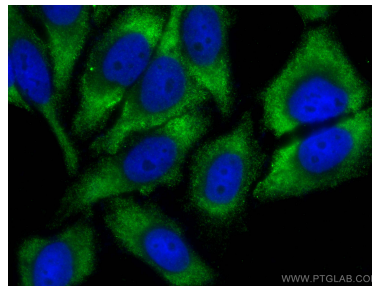
RAW 264.7 cells were subjected to SDS PAGE followed by western blot with 22577-1-AP (RNASEL Antibody) at dilution of 1:600 incubated at room temperature for 1.5 hours.



Immunohistochemical analysis of paraffin-embedded human tonsillitis tissue slide using 22577-1-AP (RNASEL Antibody) at dilution of 1:50 (under 40x lens).



Immunohistochemical analysis of paraffin-embedded human spleen tissue slide using 22577-1-AP (RNASEL Antibody) at dilution of 1:50 (under 40x lens).



Immunofluorescent analysis of (-20°C Ethanol) fixed HepG2 cells using RNASEL antibody (22577-1-AP) at dilution of 1:200 and CoraLite®488-Conjugated AffiniPure Goat Anti-Rabbit IgG(H+L) (SA00013-2).