

For Research Use Only

RFX6 Polyclonal antibody

Catalog Number: 22551-1-AP **1 Publications**



Basic Information

Catalog Number: 22551-1-AP	GenBank Accession Number: BC039248	Purification Method: Antigen affinity purification
Size: 150ul , Concentration: 800 µg/ml by Nanodrop and 280 µg/ml by Bradford method using BSA as the standard;	GeneID (NCBI): 222546	Recommended Dilutions: WB 1:200-1:1000
Source: Rabbit	Full Name: regulatory factor X, 6	
Isotype: IgG	Calculated MW: 928 aa, 102 kDa	
Immunogen Catalog Number: AG18235	Observed MW: 102 kDa	

Applications

Tested Applications: WB,ELISA	Positive Controls: WB : Caco-2 cells,
Cited Applications: IHC, WB	
Species Specificity: human	
Cited Species: human	

Background Information

The RFX proteins represent an essential class II transcription factor family that share several conserved regions, including a centrally located DNA-binding domain (DBD) and a C-terminal D region that facilitates dimerization. RFX6, also known as RFXDC1, is a 928 amino acid nuclear protein that, via interactions with other RFX proteins, can bind DNA and is thought to activate the transcription of target genes. RFX6 is specifically expressed in pancreas, small intestine and colon. Mutations in the gene encoding RFX6 is the cause of the Mitchell-Riley syndrome (MIRIS), which is characterized by neonatal diabetes, duodenal and jejunal atresia, a hypoplastic or annular pancreas and absent gallbladder.

Notable Publications

Author	Pubmed ID	Journal	Application
Zhiyu Qiu	38093528	Clin Transl Med	WB,IHC

Storage

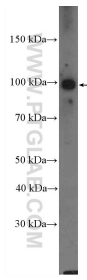
Storage:
Store at -20°C. Stable for one year after shipment.
Storage Buffer:
PBS with 0.02% sodium azide and 50% glycerol pH 7.3.
Aliquoting is unnecessary for -20°C storage

*** 20ul sizes contain 0.1% BSA

For technical support and original validation data for this product please contact:
T: 1 (888) 4PTGLAB (1-888-478-4522) (toll free in USA), or 1(312) 455-8498 (outside USA)
E: proteintech@ptglab.com
W: ptglab.com

This product is exclusively available under Proteintech Group brand and is not available to purchase from any other manufacturer.

Selected Validation Data



Caco-2 cells were subjected to SDS PAGE followed by western blot with 22551-1-AP (RF)6 Antibody at dilution of 1:300 incubated at room temperature for 1.5 hours.