

For Research Use Only

# SOSTDC1 Polyclonal antibody

Catalog Number: 22213-1-AP



## Basic Information

<b>Catalog Number:</b> 22213-1-AP	<b>GenBank Accession Number:</b> BC008484	<b>Purification Method:</b> Antigen affinity purification
<b>Size:</b> 150ul , Concentration: 550 µg/ml by Nanodrop;	<b>GeneID (NCBI):</b> 25928	<b>Recommended Dilutions:</b> WB 1:500-1:2000
<b>Source:</b> Rabbit	<b>Full Name:</b> sclerostin domain containing 1	
<b>Isotype:</b> IgG	<b>Calculated MW:</b> 206 aa, 23 kDa	
<b>Immunogen Catalog Number:</b> AG17538	<b>Observed MW:</b> 23-26 kDa	

## Applications

<b>Tested Applications:</b> WB, ELISA	<b>Positive Controls:</b> WB : human milk,
<b>Species Specificity:</b> human	

## Background Information

SOSTDC1 (Sclerostin domain-containing protein 1), also known as Ectodin (Ectodermal BMP inhibitor), is a member of the sclerostin family. It is an N-glycosylated, secreted protein with a C-terminal cystine knot-like domain and is highly abundant in milk and kidney. This protein functions as a bone morphogenetic protein (BMP) antagonist. Specifically, it directly associates with BMPs, prohibiting them from binding their receptors, thereby regulating BMP signaling during cellular proliferation, differentiation, and programmed cell death.

## Storage

**Storage:**  
Store at -20°C. Stable for one year after shipment.  
**Storage Buffer:**  
PBS with 0.02% sodium azide and 50% glycerol pH 7.3.  
Aliquoting is unnecessary for -20°C storage

\*\*\* 20ul sizes contain 0.1% BSA

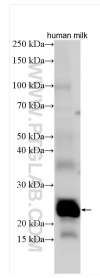
For technical support and original validation data for this product please contact:

T: 1 (888) 4PTGLAB (1-888-478-4522) (toll free in USA), or 1(312) 455-8498 (outside USA)

E: [proteintech@ptglab.com](mailto:proteintech@ptglab.com)  
W: [ptglab.com](http://ptglab.com)

This product is exclusively available under Proteintech Group brand and is not available to purchase from any other manufacturer.

## Selected Validation Data



Various lysates were subjected to SDS PAGE followed by western blot with 22213-1-AP (SOSTDC1 antibody) at dilution of 1:1000 incubated at room temperature for 1.5 hours.