

For Research Use Only

ENDO G Polyclonal antibody

Catalog Number: 22148-1-AP **11 Publications**



Basic Information

Catalog Number: 22148-1-AP	GenBank Accession Number: BC016351	Purification Method: Antigen affinity purification
Size: 150ul, Concentration: 400 µg/ml by Nanodrop;	GeneID (NCBI): 2021	Recommended Dilutions: WB 1:2000-1:16000 IP 0.5-4.0 ug for 1.0-3.0 mg of total protein lysate
Source: Rabbit	Full Name: endonuclease G	
Isotype: IgG	Calculated MW: 297 aa, 33 kDa	
Immunogen Catalog Number: AG17739	Observed MW: 27-30 kDa	

Applications

Tested Applications: IP, WB, ELISA	Positive Controls:
Cited Applications: IF, IHC, WB	WB: mouse heart tissue, mouse kidney tissue, mouse liver tissue, mouse skeletal muscle tissue, rat kidney tissue, rat liver tissue
Species Specificity: human, mouse, rat	IP: mouse heart tissue,
Cited Species: human, rat, mouse	

Background Information

Endonuclease G, also named as EndoG, is a mitochondrial protein. It's a nuclease which was first characterized in bovine heart mitochondrial extracts. It's involved in many cellular process, including apoptosis, paternal mitochondrial elimination and autophagy (PMID:33473107). It is a nuclear encoded, sugar-non-specific (PMID:15066427) and well-conserved nuclease (PMID:17244531). It can be released from the mitochondria and translocated to the nucleus where it induces fragmentation of DNA, leading to apoptosis (PMID:11452314). EndoG is a 297-amino-acid long protein with a molecular weight of 30-35 kDa. There is a homodimer form with MW about 60-70 kDa.

Notable Publications

Author	Pubmed ID	Journal	Application
Han Liao	26415619	Chem Biol Interact	WB
Maria Luisa Valle	36241022	Mol Cell Neurosci	WB
Weichen Xiong	34025394	Front Pharmacol	WB

Storage

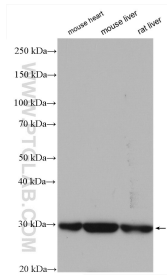
Storage:
Store at -20°C. Stable for one year after shipment.
Storage Buffer:
PBS with 0.02% sodium azide and 50% glycerol pH 7.3.
Aliquoting is unnecessary for -20°C storage

*** 20ul sizes contain 0.1% BSA

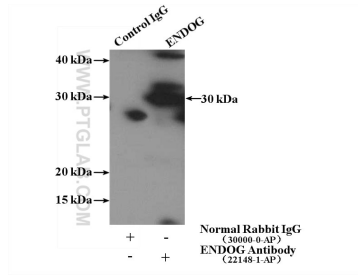
For technical support and original validation data for this product please contact:
T: 1 (888) 4PTGLAB (1-888-478-4522) (toll free in USA), or 1(312) 455-8498 (outside USA)
E: proteintech@ptglab.com
W: ptglab.com

This product is exclusively available under Proteintech Group brand and is not available to purchase from any other manufacturer.

Selected Validation Data



Various lysates were subjected to SDS PAGE followed by western blot with 22148-1-AP (ENDOG antibody) at dilution of 1:8000 incubated at room temperature for 1.5 hours.



IP Result of anti-ENDOG (IP:22148-1-AP, 4ug; Detection:22148-1-AP 1:1000) with mouse heart tissue lysate 4000ug.