

For Research Use Only

RYK Polyclonal antibody

Catalog Number: 22138-1-AP

Featured Product

3 Publications



Basic Information

Catalog Number: 22138-1-AP	GenBank Accession Number: BC153090	Purification Method: Antigen affinity purification
Size: 150ul, Concentration: 450 µg/ml by Nanodrop and 307 µg/ml by Bradford method using BSA as the standard;	GeneID (NCBI): 6259	Recommended Dilutions: WB 1:500-1:2000 IHC 1:20-1:200 IF 1:20-1:200
Source: Rabbit	Full Name: RYK receptor-like tyrosine kinase	
Isotype: IgG	Calculated MW: 610 aa, 68 kDa	
Immunogen Catalog Number: AG17540	Observed MW: 67-75 kDa	

Applications

Tested Applications: IF, IHC, WB, ELISA	Positive Controls:
Cited Applications: WB	WB: Jurkat cells, A549 cells, mouse brain tissue, SH-SY5Y cells
Species Specificity: human, mouse, rat	IHC: human kidney tissue, human ovary tissue
Cited Species: human, mouse	IF: SH-SY5Y cells,

Note-IHC: suggested antigen retrieval with TE buffer pH 9.0; (*) Alternatively, antigen retrieval may be performed with citrate buffer pH 6.0

Background Information

Notable Publications

Author	Pubmed ID	Journal	Application
Yitian Lu	36071475	J Neuroinflammation	WB
Zhaoyi Liang	36210461	Cell Mol Biol Lett	WB
Ricardo D Gonzalez	37242509	Pharmaceuticals (Basel)	WB

Storage

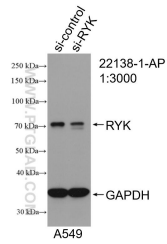
Storage:
Store at -20°C. Stable for one year after shipment.
Storage Buffer:
PBS with 0.02% sodium azide and 50% glycerol pH 7.3.
Aliquoting is unnecessary for -20°C storage

*** 20ul sizes contain 0.1% BSA

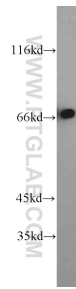
For technical support and original validation data for this product please contact:
T: 1 (888) 4PTGLAB (1-888-478-4522) (toll free in USA), or 1(312) 455-8498 (outside USA)
E: proteintech@ptglab.com
W: ptglab.com

This product is exclusively available under Proteintech Group brand and is not available to purchase from any other manufacturer.

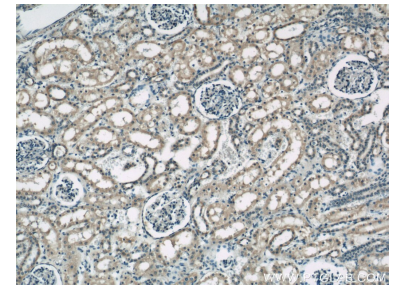
Selected Validation Data



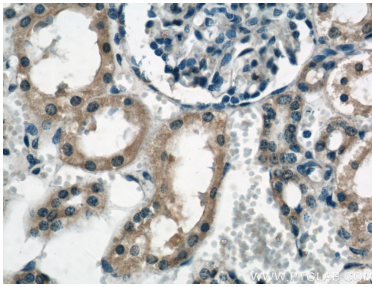
WB result of RYK antibody (22138-1-AP; 1:3000; incubated at room temperature for 1.5 hours) with sh-Control and sh-RYK transfected A549 cells.



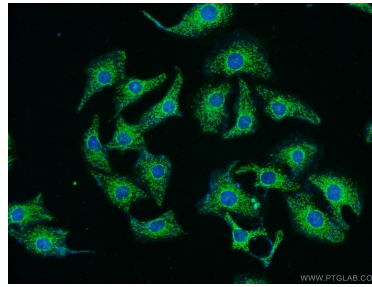
Jurkat cells were subjected to SDS PAGE followed by western blot with 22138-1-AP (RYK antibody) at dilution of 1:1000 incubated at room temperature for 1.5 hours.



Immunohistochemical analysis of paraffin-embedded human kidney using 22138-1-AP (RYK antibody) at dilution of 1:50 (under 10x lens).



Immunohistochemical analysis of paraffin-embedded human kidney using 22138-1-AP (RYK antibody) at dilution of 1:50 (under 40x lens).



Immunofluorescent analysis of SH-SY5Y cells using 22138-1-AP (RYK antibody) at dilution of 1:50 and Alexa Fluor 488-conjugated AffiniPure Goat Anti-Rabbit IgG(H+L).