

For Research Use Only

RBM22 Polyclonal antibody

Catalog Number: 22103-1-AP



Basic Information

Catalog Number: 22103-1-AP	GenBank Accession Number: BC003402	Purification Method: Antigen affinity purification
Size: 150ul , Concentration: 1000 µg/ml by Nanodrop and 647 µg/ml by Bradford method using BSA as the standard;	GeneID (NCBI): 55696	Recommended Dilutions: WB 1:500-1:2000
Source: Rabbit	UNIPROT ID: Q9NW64	
Isotype: IgG	Full Name: RNA binding motif protein 22	
Immunogen Catalog Number: AG17315	Calculated MW: 420 aa, 47 kDa	
	Observed MW: 47-50 kDa	

Applications

Tested Applications: WB, ELISA	Positive Controls: WB : Raji cells, NIH/3T3 cells, Raji cell
Species Specificity: human, mouse, rat	

Background Information

RBM22 is mainly involved in pre-mRNA splicing, playing the essential role of maintaining the conformation of the catalytic core of the spliceosome and acting as a bridge between the catalytic core and other essential protein components of the spliceosome. RBM22 is also involved in gene regulation, and is able to bind DNA, acting as a bona fide transcription factor on a large number of target genes. Due to its wide scope in the regulation of gene expression, RBM22 has been associated with several pathologies and, notably, with the aggressiveness of cancer cells and with the phenotype of a myelodysplastic syndrome. (PMID: 35158909)

Storage

Storage:
Store at -20°C. Stable for one year after shipment.
Storage Buffer:
PBS with 0.02% sodium azide and 50% glycerol pH 7.3.
Aliquoting is unnecessary for -20°C storage

*** 20ul sizes contain 0.1% BSA

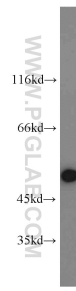
For technical support and original validation data for this product please contact:

T: 1 (888) 4PTGLAB (1-888-478-4522) (toll free in USA), or 1(312) 455-8498 (outside USA)

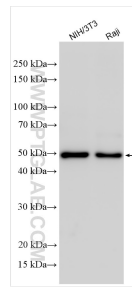
E: proteintech@ptglab.com
W: ptglab.com

This product is exclusively available under Proteintech Group brand and is not available to purchase from any other manufacturer.

Selected Validation Data



Raji cells were subjected to SDS PAGE followed by western blot with 22103-1-AP (RBM22 antibody) at dilution of 1:1000 incubated at room temperature for 1.5 hours.



Various lysates were subjected to SDS PAGE followed by western blot with 22103-1-AP (RBM22 antibody) at dilution of 1:5000 incubated at room temperature for 1.5 hours.