

For Research Use Only

SYTL3 Polyclonal antibody

Catalog Number: 22076-1-AP **2 Publications**



Basic Information

Catalog Number: 22076-1-AP	GenBank Accession Number: BC100830	Purification Method: Antigen affinity purification
Size: 150ul, Concentration: 700 µg/ml by Nanodrop and 353 µg/ml by Bradford method using BSA as the standard;	GeneID (NCBI): 94120	Recommended Dilutions: WB 1:500-1:1000 IHC 1:50-1:500
Source: Rabbit	Full Name: synaptotagmin-like 3	
Isotype: IgG	Calculated MW: 610 aa, 69 kDa	
Immunogen Catalog Number: AG17219	Observed MW: 69 kDa	

Applications

Tested Applications: IHC, WB, ELISA	Positive Controls: WB: mouse liver tissue, IHC: human kidney tissue,
Cited Applications: WB	
Species Specificity: human, mouse, rat	
Cited Species: human, mouse, rat	

Note-IHC: suggested antigen retrieval with TE buffer pH 9.0; (*) Alternatively, antigen retrieval may be performed with citrate buffer pH 6.0

Background Information

Notable Publications

Author	Pubmed ID	Journal	Application
Jeremies Ibanga	35316306	PLoS One	WB
Hong Lin	33911083	Nat Commun	WB

Storage

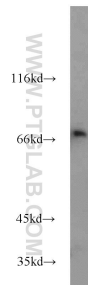
Storage:
Store at -20°C. Stable for one year after shipment.
Storage Buffer:
PBS with 0.02% sodium azide and 50% glycerol pH 7.3.
Aliquoting is unnecessary for -20°C storage

***** 20ul sizes contain 0.1% BSA**

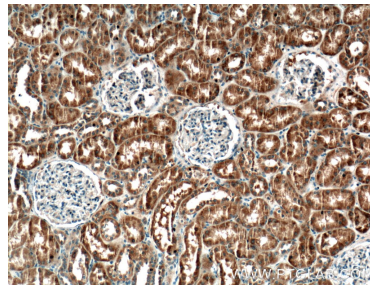
For technical support and original validation data for this product please contact:
T: 1 (888) 4PTGLAB (1-888-478-4522) (toll free in USA), or 1(312) 455-8498 (outside USA)
E: proteintech@ptglab.com
W: ptglab.com

This product is exclusively available under Proteintech Group brand and is not available to purchase from any other manufacturer.

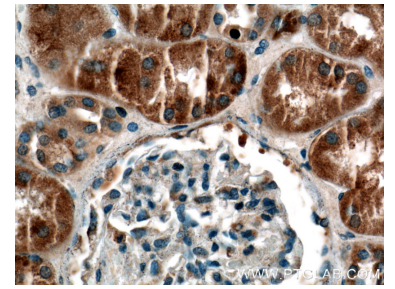
Selected Validation Data



mouse liver tissue were subjected to SDS PAGE followed by western blot with 22076-1-AP (SYTL3 antibody) at dilution of 1:500 incubated at room temperature for 1.5 hours.



Immunohistochemical analysis of paraffin-embedded human kidney tissue slide using 22076-1-AP (SYTL3 Antibody) at dilution of 1:200 (under 10x lens).



Immunohistochemical analysis of paraffin-embedded human kidney tissue slide using 22076-1-AP (SYTL3 Antibody) at dilution of 1:200 (under 40x lens).