

For Research Use Only

SAMD14 Polyclonal antibody

Catalog Number: 22009-1-AP



Basic Information

Catalog Number: 22009-1-AP	GenBank Accession Number: BC141822	Purification Method: Antigen affinity purification
Size: 150ul , Concentration: 700 µg/ml by Nanodrop and 593 µg/ml by Bradford method using BSA as the standard;	GeneID (NCBI): 201191	Recommended Dilutions: WB 1:1000-1:4000 IHC 1:50-1:500 IF 1:50-1:500
Source: Rabbit	Full Name: sterile alpha motif domain containing 14	
Isotype: IgG	Calculated MW: 445 aa, 48 kDa	
Immunogen Catalog Number: AG15653	Observed MW: 50-55 kDa	

Applications

Tested Applications: IF, IHC, WB, ELISA	Positive Controls: WB : COLO 320 cells, HEK-293 cells IHC : human kidney tissue, IF : HepG2 cells,
Species Specificity: human	
Note-IHC: suggested antigen retrieval with TE buffer pH 9.0; (*) Alternatively, antigen retrieval may be performed with citrate buffer pH 6.0	

Background Information

Storage

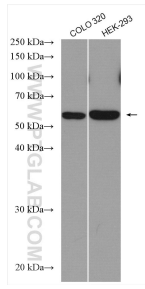
Storage:
Store at -20°C. Stable for one year after shipment.
Storage Buffer:
PBS with 0.02% sodium azide and 50% glycerol pH 7.3.
Aliquoting is unnecessary for -20°C storage

*** 20ul sizes contain 0.1% BSA

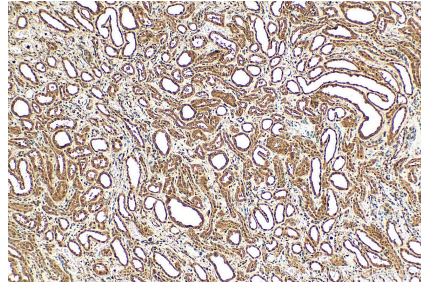
For technical support and original validation data for this product please contact:
T: 1 (888) 4PTGLAB (1-888-478-4522) (toll free in USA), or 1(312) 455-8498 (outside USA)
E: proteintech@ptglab.com
W: ptglab.com

This product is exclusively available under Proteintech Group brand and is not available to purchase from any other manufacturer.

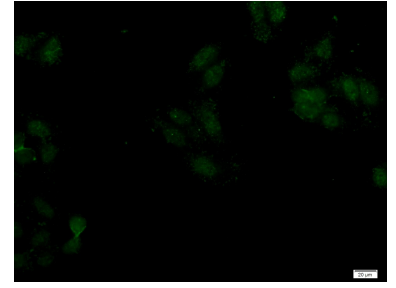
Selected Validation Data



Various lysates were subjected to SDS PAGE followed by western blot with 22009-1-AP (SAM14 antibody) at dilution of 1:2000 incubated at room temperature for 1.5 hours.



Immunohistochemical analysis of paraffin-embedded human kidney tissue slide using 22009-1-AP (SAM14 antibody) at dilution of 1:200 (under 10x lens). Heat mediated antigen retrieval with Tris-EDTA buffer (pH 9.0).



Immunofluorescent analysis of HepG2 cells using 22009-1-AP (SAM14 antibody) at dilution of 1:50 and Alexa Fluor 488-conjugated AffiniPure Goat Anti-Rabbit IgG(H+L).