

For Research Use Only

# RAPGEFL1 Polyclonal antibody

Catalog Number: 21746-1-AP



## Basic Information

<b>Catalog Number:</b> 21746-1-AP	<b>GenBank Accession Number:</b> BC115374	<b>Purification Method:</b> Antigen affinity purification
<b>Size:</b> 150ul , Concentration: 450 µg/ml by Nanodrop and 287 µg/ml by Bradford method using BSA as the standard;	<b>GeneID (NCBI):</b> 51195	<b>Recommended Dilutions:</b> WB 1:500-1:2400 IF 1:10-1:100
<b>Source:</b> Rabbit	<b>Full Name:</b> Rap guanine nucleotide exchange factor (GEF)-like 1	
<b>Isotype:</b> IgG	<b>Calculated MW:</b> 662 aa, 73 kDa	
<b>Immunogen Catalog Number:</b> AG16506	<b>Observed MW:</b> 73 kDa, 59 kDa	

## Applications

<b>Tested Applications:</b> IF, WB, ELISA	<b>Positive Controls:</b>
<b>Species Specificity:</b> human, mouse, rat	<b>WB:</b> human brain tissue, mouse kidney tissue <b>IF:</b> HepG2 cells,

## Background Information

### Storage

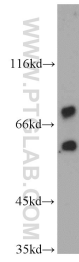
**Storage:**  
Store at -20°C. Stable for one year after shipment.  
**Storage Buffer:**  
PBS with 0.02% sodium azide and 50% glycerol pH 7.3.  
Aliquoting is unnecessary for -20°C storage

\*\*\* 20ul sizes contain 0.1% BSA

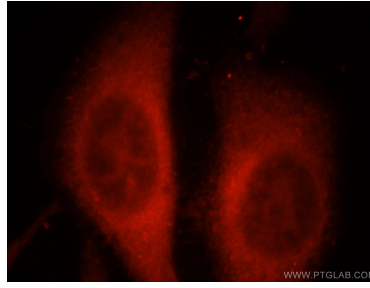
For technical support and original validation data for this product please contact:  
T: 1 (888) 4PTGLAB (1-888-478-4522) (toll free in USA), or 1(312) 455-8498 (outside USA)  
E: proteintech@ptglab.com  
W: ptglab.com

This product is exclusively available under Proteintech Group brand and is not available to purchase from any other manufacturer.

## Selected Validation Data



human brain tissue were subjected to SDS PAGE followed by western blot with 21746-1-AP (RAPGEFL1 antibody) at dilution of 1:500 incubated at room temperature for 1.5 hours.



Immunofluorescent analysis of HepG2 cells, using RAPGEFL1 antibody 21746-1-AP at 1:25 dilution and Rhodamine-labeled goat anti-rabbit IgG (red).