

For Research Use Only

GBX2 Polyclonal antibody

Catalog Number: 21639-1-AP

Featured Product

2 Publications



Basic Information

Catalog Number:
21639-1-AP

Size:
150ul, Concentration: 900 µg/ml by Nanodrop;

Source:
Rabbit

Isotype:
IgG

Immunogen Catalog Number:
AG16288

GenBank Accession Number:
BC137448

GeneID (NCBI):
2637

Full Name:
gastrulation brain homeobox 2

Calculated MW:
348 aa, 37 kDa

Observed MW:
33-37 kDa

Purification Method:
Antigen affinity purification

Recommended Dilutions:
WB 1:500-1:1000
IP 0.5-4.0 ug for IP and 1:200-1:1000 for WB
IF 1:50-1:500

Applications

Tested Applications:
IF, IP, WB, ELISA

Cited Applications:
ChIP, WB

Species Specificity:
human, mouse

Cited Species:
human

Positive Controls:

WB: mouse stomach tissue,

IP: HeLa cells,

IF: HeLa cells,

Background Information

Homeobox protein GBX-2 (GBX-2) is a homeobox gene essential for normal development of the midbrain and the anterior hindbrain. It mainly expressed in the brain, and located in nucleoplasm. It is presumably a transcription factor that is likely to regulate the expression of genes involved in establishing early A/P pattern in the neural plate (PMID: 9247335).

Notable Publications

Author	Pubmed ID	Journal	Application
Yaoyao Xiong	35672622	Funct Integr Genomics	WB, ChIP
Xiwen Li	32618493	RNA Biol	ChIP

Storage

Storage:

Store at -20°C. Stable for one year after shipment.

Storage Buffer:

PBS with 0.02% sodium azide and 50% glycerol pH 7.3.

Aliquoting is unnecessary for -20°C storage

*** 20ul sizes contain 0.1% BSA

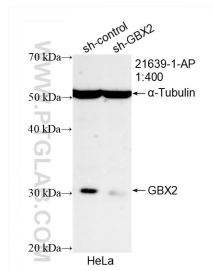
For technical support and original validation data for this product please contact:

T: 1 (888) 4PTGLAB (1-888-478-4522) (toll free in USA), or 1(312) 455-8498 (outside USA)

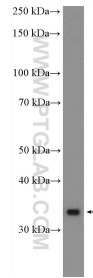
E: proteintech@ptglab.com
W: ptglab.com

This product is exclusively available under Proteintech Group brand and is not available to purchase from any other manufacturer.

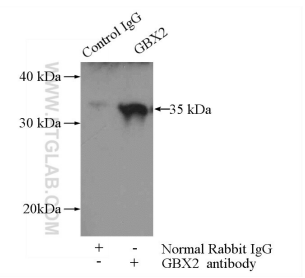
Selected Validation Data



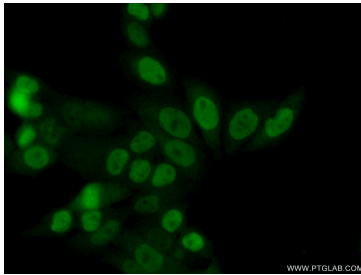
WB result of GBX2 antibody (21639-1-AP; 1:400; incubated at room temperature for 1.5 hours) with sh-Control and sh-GBX2 transfected HeLa cells.



mouse stomach tissue were subjected to SDS PAGE followed by western blot with 21639-1-AP (GBX2 Antibody) at dilution of 1:600 incubated at room temperature for 1.5 hours.



IP Result of anti-GBX2 (IP:21639-1-AP, 4ug; Detection:21639-1-AP 1:300) with HeLa cells lysate 3000ug.



Immunofluorescent analysis of (10% Formaldehyde) fixed HeLa cells using 21639-1-AP (GBX2 antibody) at dilution of 1:50 and Alexa Fluor 488-conjugated AffiniPure Goat Anti-Rabbit IgG(H+L).