

For Research Use Only

# FHL2 Polyclonal antibody

Catalog Number: 21619-1-AP

Featured Product

11 Publications



## Basic Information

<b>Catalog Number:</b> 21619-1-AP	<b>GenBank Accession Number:</b> BC014397	<b>Purification Method:</b> Antigen affinity purification
<b>Size:</b> 150ul, Concentration: 500 µg/ml by Nanodrop;	<b>GeneID (NCBI):</b> 2274	<b>Recommended Dilutions:</b> WB 1:5000-1:50000 IP 0.5-4.0 µg for 1.0-3.0 mg of total protein lysate
<b>Source:</b> Rabbit	<b>Full Name:</b> four and a half LIM domains 2	<b>IHC 1:50-1:500</b>
<b>Isotype:</b> IgG	<b>Calculated MW:</b> 32 kDa	<b>IF 1:50-1:500</b>
<b>Immunogen Catalog Number:</b> AG1378	<b>Observed MW:</b> 32 kDa	

## Applications

**Tested Applications:**  
IF, IHC, IP, WB, ELISA

**Cited Applications:**  
CoIP, IF, IHC, IP, WB

**Species Specificity:**  
human, mouse, rat

**Cited Species:**  
human, mouse

**Note-IHC: suggested antigen retrieval with TE buffer pH 9.0; (\*) Alternatively, antigen retrieval may be performed with citrate buffer pH 6.0**

**Positive Controls:**

**WB:** HeLa cells, U2OS cells, hTERT-RPE1 cells, NIH/3T3 cells

**IP:** mouse skeletal muscle tissue,

**IHC:** human heart tissue,

**IF:** HeLa cells, A431 cells

## Background Information

### Notable Publications

Author	Pubmed ID	Journal	Application
Fabiana Martino	36417487	Sci Transl Med	WB, CoIP
Raymond M Johnson	29158429	Infect Immun	WB
Yuandong Cao	33787085	Cancer Med	IP, WB

## Storage

**Storage:**

Store at -20°C. Stable for one year after shipment.

**Storage Buffer:**

PBS with 0.02% sodium azide and 50% glycerol pH 7.3.

Aliquoting is unnecessary for -20°C storage

\*\*\* 20ul sizes contain 0.1% BSA

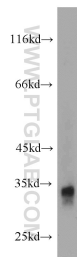
For technical support and original validation data for this product please contact:

T: 1 (888) 4PTGLAB (1-888-478-4522) (toll free in USA), or 1(312) 455-8498 (outside USA)

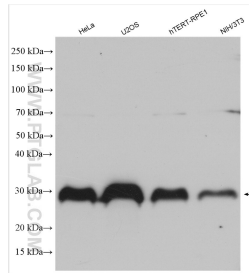
E: [proteintech@ptglab.com](mailto:proteintech@ptglab.com)  
W: [ptglab.com](http://ptglab.com)

This product is exclusively available under Proteintech Group brand and is not available to purchase from any other manufacturer.

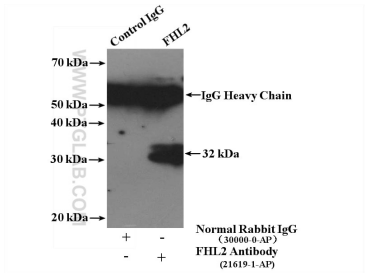
## Selected Validation Data



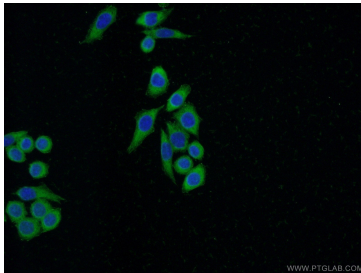
mouse ovary tissue were subjected to SDS PAGE followed by western blot with 21619-1-AP (FHL2 antibody) at dilution of 1:1000 incubated at room temperature for 1.5 hours.



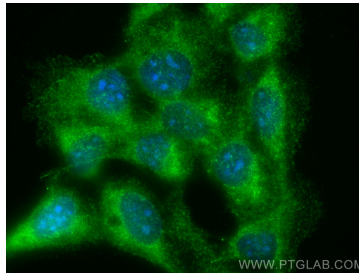
Various lysates were subjected to SDS PAGE followed by western blot with 21619-1-AP (FHL2 antibody) at dilution of 1:10000 incubated at room temperature for 1.5 hours.



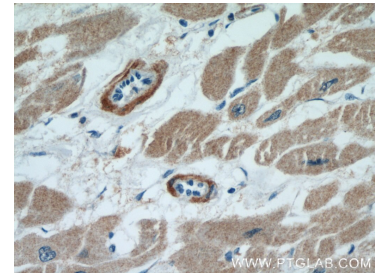
IP Result of anti-FHL2 (IP:21619-1-AP, 4ug; Detection:21619-1-AP 1:1000) with mouse skeletal muscle tissue lysate 2200ug.



Immunofluorescent analysis of (-20°C Ethanol) fixed HeLa cells using 21619-1-AP (FHL2 antibody) at dilution of 1:50 and Alexa Fluor 488-conjugated AffiniPure Goat Anti-Rabbit IgG(H+L).



Immunofluorescent analysis of (-20°C Methanol) fixed A431 cells using FHL2 antibody (21619-1-AP) at dilution of 1:500 and Coralite®488-Conjugated AffiniPure Goat Anti-Rabbit IgG(H+L).



Immunohistochemical analysis of paraffin-embedded human heart using 21619-1-AP (FHL2 antibody) at dilution of 1:50 (under 40x lens).