

For Research Use Only

# SLC25A25 Polyclonal antibody

Catalog Number: 21568-1-AP **1 Publications**



## Basic Information

<b>Catalog Number:</b> 21568-1-AP	<b>GenBank Accession Number:</b> BC103933	<b>Purification Method:</b> Antigen affinity purification
<b>Size:</b> 150ul, Concentration: 133 µg/ml by Nanodrop and 133 µg/ml by Bradford method using BSA as the standard;	<b>GeneID (NCBI):</b> 114789	<b>Recommended Dilutions:</b> WB 1:500-1:1000 IHC 1:20-1:200
<b>Source:</b> Rabbit	<b>Full Name:</b> solute carrier family 25 (mitochondrial carrier; phosphate carrier), member 25	
<b>Isotype:</b> IgG	<b>Calculated MW:</b> 469 aa, 53 kDa	
<b>Immunogen Catalog Number:</b> AG16086	<b>Observed MW:</b> 50 kDa, 100 kDa	

## Applications

<b>Tested Applications:</b> IHC, WB, ELISA	<b>Positive Controls:</b> WB : RAW 264.7 cells, RAW264.7 cells
<b>Cited Applications:</b> WB	<b>IHC :</b> human liver tissue,
<b>Species Specificity:</b> human, mouse, rat	
<b>Cited Species:</b> mouse	

**Note-IHC: suggested antigen retrieval with TE buffer pH 9.0; (\*) Alternatively, antigen retrieval may be performed with citrate buffer pH 6.0**

## Background Information

### Notable Publications

Author	Pubmed ID	Journal	Application
Clint D J Tavares	32848060	Proc Natl Acad Sci U S A	WB

## Storage

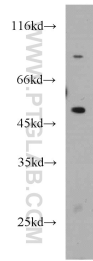
**Storage:**  
Store at -20°C. Stable for one year after shipment.  
**Storage Buffer:**  
PBS with 0.02% sodium azide and 50% glycerol pH 7.3.  
Aliquoting is unnecessary for -20°C storage

\*\*\* 20ul sizes contain 0.1% BSA

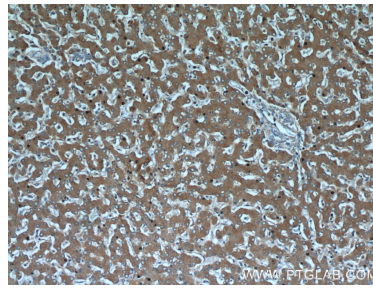
For technical support and original validation data for this product please contact:  
T: 1 (888) 4PTGLAB (1-888-478-4522) (toll free in USA), or 1(312) 455-8498 (outside USA)  
E: proteintech@ptglab.com  
W: ptglab.com

This product is exclusively available under Proteintech Group brand and is not available to purchase from any other manufacturer.

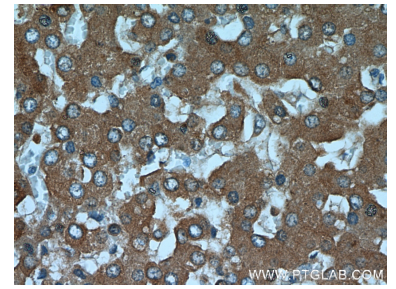
## Selected Validation Data



RAW264.7 cells were subjected to SDS PAGE followed by western blot with 21568-1-AP (SLC25A25 antibody) at dilution of 1:500 incubated at room temperature for 1.5 hours.



Immunohistochemical analysis of paraffin-embedded human liver using 21568-1-AP (SLC25A25 antibody) at dilution of 1:50 (under 10x lens).



Immunohistochemical analysis of paraffin-embedded human liver using 21568-1-AP (SLC25A25 antibody) at dilution of 1:50 (under 40x lens).