

For Research Use Only

LAX1 Polyclonal antibody

Catalog Number: 21557-1-AP **2 Publications**



Basic Information

Catalog Number: 21557-1-AP	GenBank Accession Number: BC069650	Purification Method: Antigen affinity purification
Size: 150ul , Concentration: 500 µg/ml by Nanodrop and 307 µg/ml by Bradford method using BSA as the standard;	GeneID (NCBI): 54900	Recommended Dilutions: WB 1:500-1:1000 IHC 1:20-1:200 IF 1:20-1:200
Source: Rabbit	Full Name: Lymphocyte transmembrane adaptor 1	
Isotype: IgG	Calculated MW: 398 aa, 44 kDa	
Immunogen Catalog Number: AG15599	Observed MW: 44 kDa	

Applications

Tested Applications: IF, IHC, WB, ELISA	Positive Controls: WB : HeLa cells, Jurkat cells
Cited Applications: WB	IHC : human spleen tissue,
Species Specificity: human, mouse, rat	IF : HeLa cells,
Cited Species: human, mouse	

Note-IHC: suggested antigen retrieval with TE buffer pH 9.0; (*) Alternatively, antigen retrieval may be performed with citrate buffer pH 6.0

Background Information

Notable Publications

Author	Pubmed ID	Journal	Application
Hengjun Huang	35365563	J Immunol	WB
Francesco Di Meo	37467717	Cell Rep Med	WB

Storage

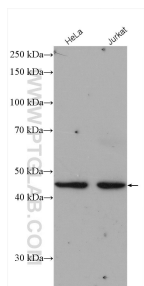
Storage:
Store at -20°C. Stable for one year after shipment.
Storage Buffer:
PBS with 0.02% sodium azide and 50% glycerol pH 7.3.
Aliquoting is unnecessary for -20°C storage

***** 20ul sizes contain 0.1% BSA**

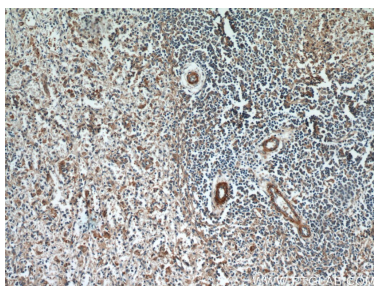
For technical support and original validation data for this product please contact:
T: 1 (888) 4PTGLAB (1-888-478-4522) (toll free in USA), or 1(312) 455-8498 (outside USA)
E: proteintech@ptglab.com
W: ptglab.com

This product is exclusively available under Proteintech Group brand and is not available to purchase from any other manufacturer.

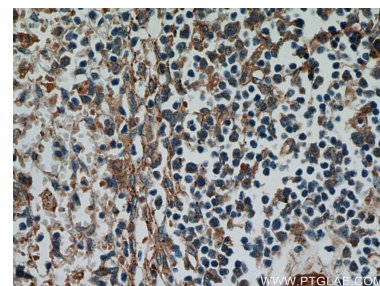
Selected Validation Data



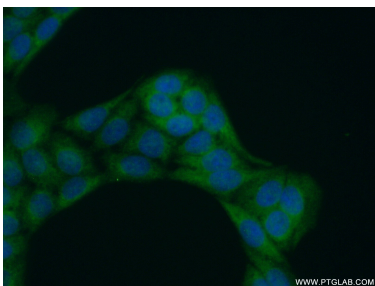
Various lysates were subjected to SDS PAGE followed by western blot with 21557-1-AP (LAX1 antibody) at dilution of 1:500 incubated at room temperature for 1.5 hours.



Immunohistochemical analysis of paraffin-embedded human spleen using 21557-1-AP (LAX1 antibody) at dilution of 1:100 (under 10x lens).



Immunohistochemical analysis of paraffin-embedded human spleen using 21557-1-AP (LAX1 antibody) at dilution of 1:100 (under 40x lens).



Immunofluorescent analysis of (-20°C Ethanol) fixed HeLa cells using 21557-1-AP (LAX1 antibody) at dilution of 1:50 and Alexa Fluor 488-conjugated AffiniPure Goat Anti-Rabbit IgG(H+L).