

For Research Use Only

# IGSF21 Polyclonal antibody

Catalog Number: 21465-1-AP

Featured Product

1 Publications



## Basic Information

<b>Catalog Number:</b> 21465-1-AP	<b>GenBank Accession Number:</b> BC007618	<b>Purification Method:</b> Antigen affinity purification
<b>Size:</b> 150ul , Concentration: 400 µg/ml by Nanodrop and 200 µg/ml by Bradford method using BSA as the standard;	<b>GeneID (NCBI):</b> 84966	<b>Recommended Dilutions:</b> WB 1:500-1:2000
<b>Source:</b> Rabbit	<b>Full Name:</b> immunoglobulin superfamily, member 21	
<b>Isotype:</b> IgG	<b>Calculated MW:</b> 467 aa, 52 kDa	
<b>Immunogen Catalog Number:</b> AG15062	<b>Observed MW:</b> 48-50 kDa	

## Applications

<b>Tested Applications:</b> WB, ELISA	<b>Positive Controls:</b> WB : mouse brain tissue,
<b>Cited Applications:</b> WB	
<b>Species Specificity:</b> human, mouse, rat	
<b>Cited Species:</b> mouse	

## Background Information

IGSF21 (Immunoglobulin superfamily member 21) is a GPI-anchored protein that contains two immunoglobulin-like domains (Ig-like 1 and Ig-like 2). The Ig-like 1 domain of IGSF21 is indispensable for synaptogenic activity whereas its Ig-like 2 domain is secondarily responsible for the activity. It has been reported that IGSF21 selectively regulates inhibitory presynaptic differentiation through interacting with presynaptic neuroligin 2 and plays a crucial role in synaptic inhibition in the brain. (PMID: 28864826)

## Notable Publications

Author	Pubmed ID	Journal	Application
Yuko Tanabe	28864826	Nat Commun	WB

## Storage

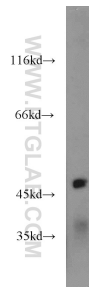
**Storage:**  
Store at -20°C. Stable for one year after shipment.  
**Storage Buffer:**  
PBS with 0.02% sodium azide and 50% glycerol pH 7.3.  
Aliquoting is unnecessary for -20°C storage

\*\*\* 20ul sizes contain 0.1% BSA

For technical support and original validation data for this product please contact:  
T: 1 (888) 4PTGLAB (1-888-478-4522) (toll free in USA), or 1(312) 455-8498 (outside USA)  
E: proteintech@ptglab.com  
W: ptglab.com

This product is exclusively available under Proteintech Group brand and is not available to purchase from any other manufacturer.

## Selected Validation Data



mouse brain tissue were subjected to SDS PAGE followed by western blot with 21465-1-AP (IGSF21 antibody) at dilution of 1:1000 incubated at room temperature for 1.5 hours.