

For Research Use Only

SPATA13 Polyclonal antibody

Catalog Number: 21400-1-AP



Basic Information

Catalog Number: 21400-1-AP	GenBank Accession Number: BC109291	Purification Method: Antigen affinity purification
Size: 150ul , Concentration: 900 µg/ml by Nanodrop and 280 µg/ml by Bradford method using BSA as the standard;	GeneID (NCBI): 221178	Recommended Dilutions: WB 1:200-1:1000 IF 1:10-1:100
Source: Rabbit	Full Name: spermatogenesis associated 13	
Isotype: IgG	Calculated MW: 652 aa, 75 kDa	
Immunogen Catalog Number: AG16101	Observed MW: 75 kDa	

Applications

Tested Applications: IF, WB, ELISA	Positive Controls:
Species Specificity: human, mouse, rat	WB: COLO 320 cells, human placenta tissue IF: HepG2 cells, HEK-293 cells, HeLa cells

Background Information

Storage

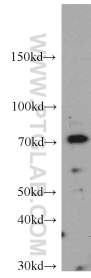
Storage:
Store at -20°C. Stable for one year after shipment.
Storage Buffer:
PBS with 0.02% sodium azide and 50% glycerol pH 7.3.
Aliquoting is unnecessary for -20°C storage

*** 20ul sizes contain 0.1% BSA

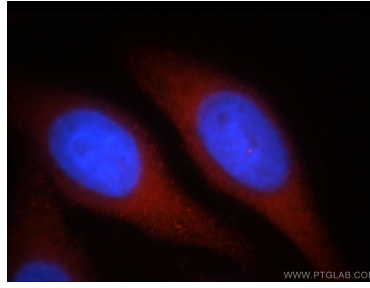
For technical support and original validation data for this product please contact:
T: 1 (888) 4PTGLAB (1-888-478-4522) (toll free in USA), or 1(312) 455-8498 (outside USA)
E: proteintech@ptglab.com
W: ptglab.com

This product is exclusively available under Proteintech Group brand and is not available to purchase from any other manufacturer.

Selected Validation Data



COLO 320 cells were subjected to SDS PAGE followed by western blot with 21400-1-AP (SPATA13 antibody) at dilution of 1:300 incubated at room temperature for 1.5 hours.



Immunofluorescent analysis of HepG2 cells, using SPATA13 antibody 21400-1-AP at 1:25 dilution and Rhodamine-labeled goat anti-rabbit IgG (red). Blue pseudocolor = DAPI (fluorescent DNA dye).