

For Research Use Only

NCKAP5L Polyclonal antibody

Catalog Number: 21392-1-AP



Basic Information

Catalog Number: 21392-1-AP	GenBank Accession Number: BC110599	Purification Method: Antigen affinity purification
Size: 150ul , Concentration: 700 µg/ml by Nanodrop and 353 µg/ml by Bradford method using BSA as the standard;	GeneID (NCBI): 57701	Recommended Dilutions: WB 1:500-1:1000 IHC 1:20-1:200
Source: Rabbit	UNIPROT ID: Q9HCHO	
Isotype: IgG	Full Name: KIAA1602	
Immunogen Catalog Number: AG16050	Calculated MW: 1334 aa, 139 kDa	
	Observed MW: 145-150 kDa	

Applications

Tested Applications:

WB, IHC, ELISA

Species Specificity:

human

Note-IHC: suggested antigen retrieval with TE buffer pH 9.0; (*) Alternatively, antigen retrieval may be performed with citrate buffer pH 6.0

Positive Controls:

WB : HeLa cells,

IHC : human skin tissue,

Background Information

NCKAP5L, also named as KIAA1602, has 4 isoforms. The target band is about 139-145 kDa for phosphorylation.

Storage

Storage:

Store at -20°C. Stable for one year after shipment.

Storage Buffer:

PBS with 0.02% sodium azide and 50% glycerol pH 7.3.

Aliquoting is unnecessary for -20°C storage

*** 20ul sizes contain 0.1% BSA

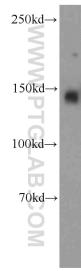
For technical support and original validation data for this product please contact:

T: 1 (888) 4PTGLAB (1-888-478-4522) (toll free in USA), or 1(312) 455-8498 (outside USA)

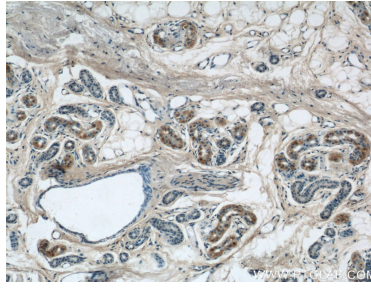
E: proteintech@ptglab.com
W: ptglab.com

This product is exclusively available under Proteintech Group brand and is not available to purchase from any other manufacturer.

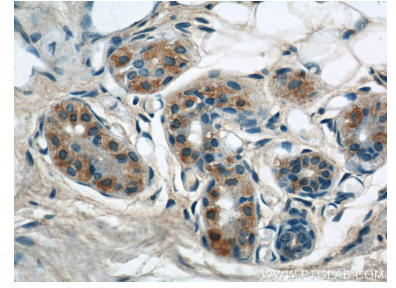
Selected Validation Data



HeLa cells were subjected to SDS PAGE followed by western blot with 21392-1-AP (NCKAP5L antibody) at dilution of 1:300 incubated at room temperature for 1.5 hours.



Immunohistochemical analysis of paraffin-embedded human skin using 21392-1-AP (NCKAP5L antibody) at dilution of 1:50 (under 10x lens).



Immunohistochemical analysis of paraffin-embedded human skin using 21392-1-AP (NCKAP5L antibody) at dilution of 1:50 (under 40x lens).