

For Research Use Only

ITGB1BP2 Polyclonal antibody

Catalog Number: 21359-1-AP



Basic Information

| | | |
|--|--|---|
| Catalog Number: 21359-1-AP | GenBank Accession Number: BC108901 | Purification Method: Antigen affinity purification |
| Size: 150ul , Concentration: 240 µg/ml by Nanodrop and 180 µg/ml by Bradford method using BSA as the standard; | GeneID (NCBI): 26548 | Recommended Dilutions: WB 1:500-1:1000 IF 1:10-1:100 |
| Source: Rabbit | Full Name: integrin beta 1 binding protein (melusin) 2 | |
| Isotype: IgG | Calculated MW: 347 aa, 38 kDa | |
| Immunogen Catalog Number: AG15808 | Observed MW: 40-45 kDa | |

Applications

| | |
|--|---|
| Tested Applications: IF, WB, ELISA | Positive Controls: |
| Species Specificity: human, mouse, rat | WB : human heart tissue, IF : HepG2 cells, |

Background Information

Storage

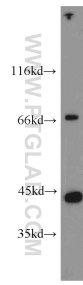
Storage:
Store at -20°C. Stable for one year after shipment.
Storage Buffer:
PBS with 0.02% sodium azide and 50% glycerol pH 7.3.
Aliquoting is unnecessary for -20°C storage

*** 20ul sizes contain 0.1% BSA

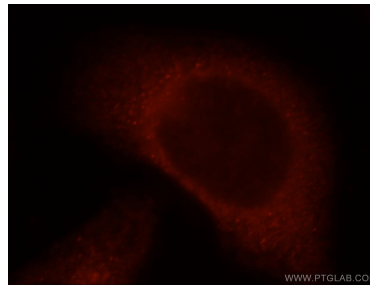
For technical support and original validation data for this product please contact:
T: 1 (888) 4PTGLAB (1-888-478-4522) (toll free in USA), or 1(312) 455-8498 (outside USA)
E: proteintech@ptglab.com
W: ptglab.com

This product is exclusively available under Proteintech Group brand and is not available to purchase from any other manufacturer.

Selected Validation Data



human heart tissue were subjected to SDS PAGE followed by western blot with 21359-1-AP (ITGB1BP2 antibody) at dilution of 1:600 incubated at room temperature for 1.5 hours.



Immunofluorescent analysis of HepG2 cells, using ITGB1BP2 antibody 21359-1-AP at 1:25 dilution and Rhodamine-labeled goat anti-rabbit IgG (red).