

For Research Use Only

SLC36A2 Polyclonal antibody

Catalog Number: 21352-1-AP



Basic Information

Catalog Number: 21352-1-AP	GenBank Accession Number: BC101101	Purification Method: Antigen affinity purification
Size: 150ul , Concentration: 750 µg/ml by Nanodrop;	GeneID (NCBI): 153201	Recommended Dilutions: WB 1:500-1:3000
Source: Rabbit	Full Name: solute carrier family 36 (proton/amino acid symporter), member 2	
Isotype: IgG	Calculated MW: 483 aa, 53 kDa	
Immunogen Catalog Number: AG15742	Observed MW: 53-60 kDa	

Applications

Tested Applications: WB, ELISA	Positive Controls: WB : mouse kidney tissue, rat kidney tissue
Species Specificity: human, Mouse, Rat	

Background Information

SLC36A2 encodes proton-coupled amino acid transporter 2 (PAT2), a high-affinity cotransporter of glycine and proline coupled with the uptake of a proton in kidney and muscles. The inactivation or reduced function of SLC36A2 is the predominant determinant of the inherited iminoglycinuria phenotype in humans.

Storage

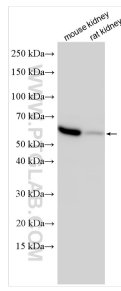
Storage:
Store at -20°C. Stable for one year after shipment.
Storage Buffer:
PBS with 0.02% sodium azide and 50% glycerol pH 7.3.
Aliquoting is unnecessary for -20°C storage

*** 20ul sizes contain 0.1% BSA

For technical support and original validation data for this product please contact:
T: 1 (888) 4PTGLAB (1-888-478-4522) (toll free in USA), or 1(312) 455-8498 (outside USA) E: proteintech@ptglab.com W: ptglab.com

This product is exclusively available under Proteintech Group brand and is not available to purchase from any other manufacturer.

Selected Validation Data



Various lysates were subjected to SDS PAGE followed by western blot with 21352-1-AP (SLC36A2 antibody) at dilution of 1:1500 incubated at room temperature for 1.5 hours.